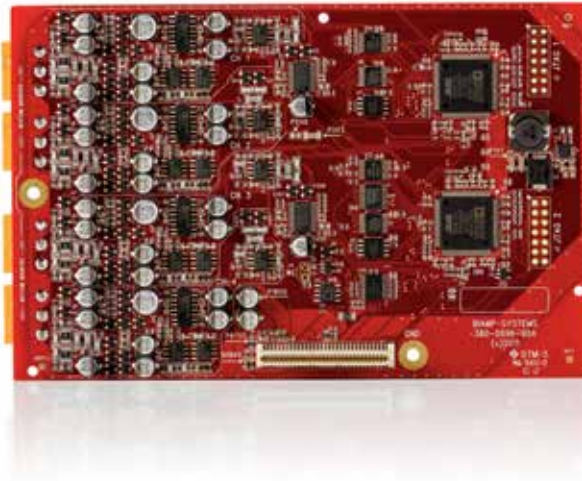


DATA SHEET

TESIRA® EEC-4

4-CHANNEL EXPANDER INPUT CARD WITH AEC



The Tesira EEC-4 is an expander card with 4 analog input channels that includes AEC (Acoustic Echo Cancellation) for use with the Tesira EX-MOD device. The EEC-4 is one of several optional cards that can be installed in Tesira EX-MOD. Each EEC-4 provides 4 channels of mic/line level audio input with AEC. The inputs are electrically balanced and provided on plug-in barrier strip connectors. Software control of each input includes gain with clip indicator, +48V phantom power, mute, level, and signal invert.

BENEFITS

- Modular input card can be mixed-and-matched in Tesira EX-MOD
- Large input gain sensitivity allows for analog input from virtually any source
- Sona™ Acoustic Echo Cancellation
- Fully configurable and controllable with software
- Premium quality pre-amp for clean, natural sound

FEATURES

- 4 channels of balanced mic or line level input with AEC (Acoustic Echo Cancellation)
- Plug-in barrier strip connectors
- 0-66dB gain, adjustable in 6dB increments
- Clip indicator
- +48V Phantom Power
- -100dB to +12dB fader range for level
- Signal invert for reverse polarity
- RoHS compliant and AES grounded
- Covered by Biamp Systems' 5-year warranty

ARCHITECTS & ENGINEERS SPECIFICATION

The mic/line input shall be a 4-channel card designed exclusively for use with Tesira EX-MOD. The modular card shall provide 4 balanced inputs with AEC on plug-in barrier strip connections. Software configuration and control for each input shall include gain with clip indication, phantom power on/off, mute, level, and signal invert. Analog-to-Digital conversion shall be 24-bit with a sampling rate of 48kHz. Performance specifications (20Hz-20kHz) shall be: Frequency Response +0/-0.25dB; THD+N <0.006% (line), <0.040% (mic); EIN <-125dBu; and Dynamic Range >108dB. The modular input card shall incorporate AES48-2005 Grounding and EMC practices and shall be compliant with the RoHS Directive. Warranty shall be 5 years. The input card shall be Tesira EEC-4.

TESIRA EEC-4 SPECIFICATIONS

Frequency Response (20Hz-20kHz @ +4dBu):	+0/-0.25dB	Phantom Power:	+48 VDC (7mA/input)
THD+N (20Hz-20kHz):		Cross Talk (channel to channel @ 1kHz):	
@ 0dB Gain, +4dBu In:	< 0.006%	@ 0dB Gain, +4dBu In:	< 85dB
@ 54dB Gain, -50dBu In:	< 0.040%	@ 54dB Gain, -50dBu In:	< 75dB
EIN (20Hz-20kHz, 66dB Gain, 150Ω):	< -125dBu	Sampling Rate:	48kHz
Dynamic Range (20Hz-20kHz, 0dB):	> 108dB	A/D Converters:	24-bit
Tail Length:	up to 300ms	Compliance:	AES48-2005 Grounding and EMI practices RoHS Directive (Europe)
Convergence:	up to 100dB/sec		
Input Impedance (balanced):	8kΩ		
Maximum Input:	+24dBu		
Maximum Gain:	66dB		
Input Gain Range (6dB Steps):	0 - 66dB		