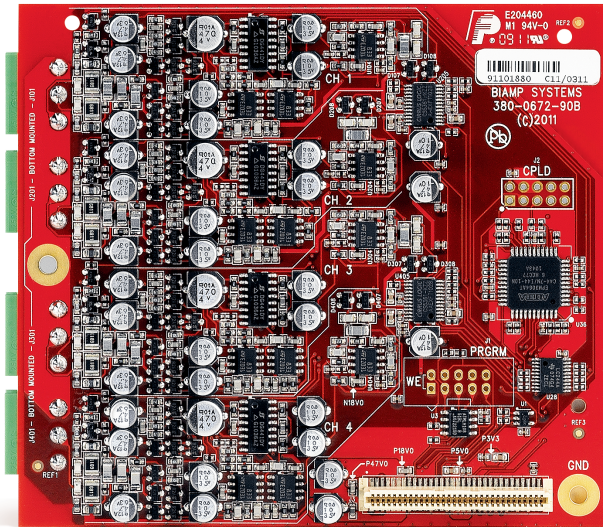


# DATA SHEET

## TESIRA® EIC-4

### 4-CHANNEL EXPANDER INPUT CARD



The Tesira® EIC-4 is an expander card with 4 analog input channels for use with Tesira EX-MOD device. The EIC-4 is one of three optional cards that can be mounted in Tesira EX-MOD. Each EIC-4 provides 4 channels of mic/line level audio input. The inputs are electrically balanced and provided on plug-in barrier strip connectors. Software control of each input includes gain with clip indicator, +48V phantom power, mute, level, and signal invert.

#### BENEFITS

- Modular input card can be mixed-and-matched in Tesira EX-MOD
- Large input gain sensitivity allows for analog input from virtually any source
- Fully configurable and controllable with software
- Premium quality pre-amp for clean, natural sound

#### FEATURES

- 4 channels of balanced mic or line level input
- Plug-in barrier strip connectors
- 0 - 66dB gain, adjustable in 6dB increments
- Clip indicator
- +48V Phantom Power
- -100dB to +12dB fader range for level
- Signal invert for reverse polarity
- RoHS compliant and AES grounded
- Covered by Biamp Systems' 5-year warranty

## ARCHITECTS & ENGINEERS SPECIFICATION

The mic/line input shall be a 4-channel card designed exclusively for use with Tesira EX-MOD. The modular card shall provide 4 balanced inputs on plug-in barrier strip connections. Software configuration and control for each input shall include gain with clip indication, phantom power on/off, mute, level, and signal invert. Analog-to-Digital conversion shall be 24-bit with a sampling rate of 48kHz. Performance specifications (20Hz-20kHz) shall be: Frequency Response +0/-0.25dB; THD+N <0.006% (line), <0.040% (mic); EIN <-125dBu; and Dynamic Range >108dB. The modular input card shall incorporate AES48-2005 Grounding and EMC practices and shall be compliant with the RoHS Directive. Warranty shall be 5 years. The input card shall be Tesira EIC-4.

## TESIRA EIC-4 SPECIFICATIONS

<b>Frequency Response (20Hz-20kHz @ +4dBu):</b>	+0/-0.25dB	<b>Phantom Power:</b>	+48 VDC (7mA/input)
<b>THD+N (20Hz-20kHz):</b>		<b>Cross Talk (channel to channel @ 1kHz):</b>	
@ 0dB Gain, +4dBu In:	< 0.006%	@ 0dB Gain, +4dBu In:	< 85dB
@ 54dB Gain, -50dBu In:	< 0.040%	@ 54dB Gain, -50dBu In:	< 75dB
<b>EIN (20Hz-20kHz, 66dB Gain, 150Ω):</b>	< -125dBu	<b>Sampling Rate:</b>	48kHz
<b>Dynamic Range (20Hz-20kHz, 0dB):</b>	> 108dB	<b>A/D Converters:</b>	24-bit
<b>Input Impedance (balanced):</b>	8kΩ	<b>Compliance:</b>	AES48-2005 Grounding and EMI practices RoHS Directive (Europe)
<b>Maximum Input:</b>	+24dBu		
<b>Maximum Gain:</b>	66dB		
<b>Input Gain Range (6dB Steps):</b>	0 - 66dB		