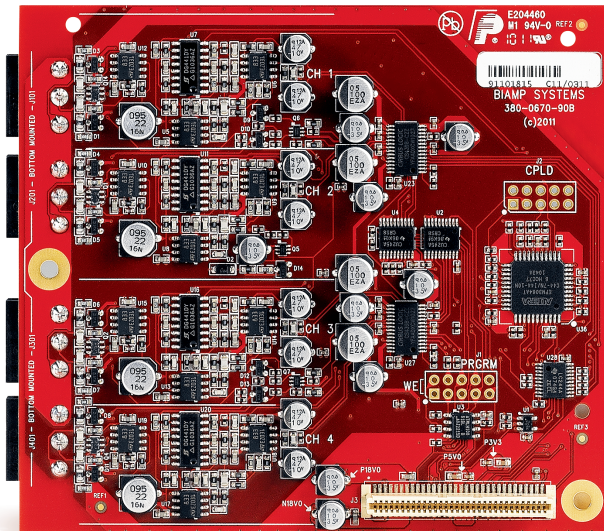


DATA SHEET

TESIRA® EOC-4

4-CHANNEL EXPANDER OUTPUT CARD



The Tesira® EOC-4 is an expander card with 4 analog output channels for use with the Tesira EX-MOD device. The EOC-4 is one of three optional cards that can be mounted in Tesira EX-MOD. Each EOC-4 provides 4 channels of mic or line level audio output. The outputs are electrically balanced and provided on plug-in barrier strip connectors. Software control of each output includes mute, level, signal invert and full-scale output reference.

BENEFITS

- Modular output card can be mixed-and-matched in Tesira EX-MOD
- Selectable output levels allow for ideal gain staging
- Fully configurable and controllable in software

FEATURES

- 4 channels of balanced mic or line level output
- Plug-in barrier strip connectors
- -100dB to +12dB fader range for level
- Signal invert for reverse polarity
- Selectable full-scale output reference level (24dBu, 18dBu, 12dBu, 6dBu, 0dBu, -31dBu) for best interface/performance
- RoHS compliant and AES grounded
- Covered by Biamp Systems' 5-year warranty

ARCHITECTS & ENGINEERS SPECIFICATION

The line level output shall be a 4-channel card designed exclusively for use with Tesira EX-MOD. The modular card shall provide 4 balanced outputs on plug-in barrier strip connections. Software configuration and control for each output shall include: mute, level, signal invert and selectable output reference level (24dBu, 18dBu, 12dBu, 6dBu, 0dBu, -31dBu). Digital-to-Analog conversion shall be 24-bit with a sampling rate of 48kHz. Performance specifications (20Hz-20kHz) shall be: Frequency Response +0/-0.25dB; THD+N < 0.0035%; and Dynamic Range > 110dB. The modular output card shall incorporate AES48-2005 Grounding and EMC practices and shall be compliant with the RoHS Directive. Warranty shall be 5 years. The output card shall be Tesira EOC-4.

TESIRA EOC-4 SPECIFICATIONS

Frequency Response (20Hz-20kHz @ +4dBu):	+0/-0.25dB	Selectable Full Scale Output Levels:	+24dBu, +18dBu, +12dBu, +6dBu, 0dBu, -31dBu
THD+N (20Hz-20kHz):	< 0.0035%	Sampling Rate:	48kHz
Dynamic Range (20Hz-20kHz, 0dB):	> 110dB	D/A Converters:	24-bit
Output Impedance (balanced):	200Ω	Compliance:	AES48-2005 Grounding and EMI practices RoHS Directive (Europe)
Maximum Output:	+24dBu		
Cross Talk (channel to channel @ 1kHz):	< -95dB		