

biamp.

# SOUND MASKING

## Product Catalog



# WHAT IS SOUND MASKING?

Sound masking is a specifically tuned ambient background sound that targets the same frequency as human speech, thereby reducing its intelligibility.

By adding sound masking to a workplace, conversations are notably less intelligible, and thus less distracting. The workplace becomes more comfortable, private, and productive.



# SOLUTIONS TO MATCH EVERY NEED ON ONE UNIFIED PLATFORM

- ▶ **SOUND MASKING**
- ▶ **PAGING**
- ▶ **BACKGROUND MUSIC**

---

## IDEAL FOR A RANGE OF APPLICATIONS



### HEALTHCARE

- Patient Rooms
- Pharmacies
- Counseling Offices
- HIPPA & HCAHPS Considerations



### GOVERNMENT

- Public Service Offices



### FINANCE

- Retail Banks
- Call Centers
- GLBA Considerations



### LEGAL

- Law Offices
- Courtrooms
- Outside Jury Deliberation Rooms



### HUMAN RESOURCES

- All areas adjacent to where privileged conversations occur



### ENTERPRISE CAMPUSES

- All areas adjacent to where privileged conversations occur



### EDUCATION

- Libraries
- Testing Rooms
- Law School Court Rooms
- FERPA Considerations



### INSURANCE OFFICES

- All areas adjacent to where privileged conversations occur

# QT X CONTROL MODULES

## QT X 300/300D

The Cambridge Qt X 300/300D control module is a sound masking generator, controller, third octave band equalizer and amplifier, with two auxiliary audio inputs to allow for distribution of audio from paging controllers and/or (background) music players. The Qt X 300/300D controls up to 3 zones of Qt Standard or Active emitters. The Qt X 300/300D control module is a compact three-zone networkable controller suitable for installations of up to 36,000 square feet (3,345 m<sup>2</sup>). Each zone can be independently adjusted for masking and aux audio levels and spectra. When multiple controllers are included in a single system audio inputs can be shared across all controllers via AVB or Dante (300/D).



## FEATURES

- Compatible with Qt Standard emitters and Qt Active emitters.
- Supports up to 3 zones
- AVB or Dante (300/D) media network
- 2 audio inputs for paging and music
- Contact closure integrates with fire alarm systems
- Front panel with LCD
- Front Panel Lock (via software control)
- Auto ramping
- Event scheduling
- Adjustable equalizer for masking and audio inputs
- 4 non-correlated sound masking audio sources per zone
- Built-in clock with system NTP support
- Wall mount bracket included; optional rack mount bracket also available
- Dual network ports (media/control)
- Web interface control by any web-enabled device
- Third party control API/Ethernet
- CE marked, UL listed, and RoHS compliant
- Met Works with WELL licensing criteria for sound masking
- Covered by Biamp Systems' five-year warranty
- Manufactured in the U.S.A.
- TAA compliant
- GSA eligible

## QT X 600/600D

The Cambridge Qt X 600/600D control module is a sound masking generator, controller, third octave band equalizer and amplifier, with two auxiliary audio inputs to allow for distribution of audio from paging controllers and/or (background) music players. The Qt X 600/600D controls up to 6 zones of Qt Standard or Active emitters. The Qt X 600/600D control module is a compact six-zone networkable controller suitable for installations of up to 72,000 square feet (6,690 m<sup>2</sup>). Each zone can be independently adjusted for masking and aux audio levels and spectra. When multiple controllers are included in a single system audio inputs can be shared across all controllers via AVB or Dante (600/D).



## FEATURES

- Compatible with Qt Standard emitters and Qt Active emitters.
- Supports up to 6 zones
- AVB or Dante (600/D) media network
- 2 audio inputs for paging and music
- Contact closure integrates with fire alarm systems
- Front panel with LCD
- Front Panel Lock (via software control)
- Auto ramping
- Event scheduling
- Adjustable equalizer for masking and audio inputs
- 4 non-correlated sound masking audio sources per zone
- Built-in clock with system NTP support
- Wall mount bracket included; optional rack mount bracket also available
- Dual network ports (media/control)
- Web interface control by any web-enabled device
- Third party control API/Ethernet
- CE marked, UL listed, and RoHS compliant
- Covered by Biamp Systems' five-year warranty
- Manufactured in the U.S.A.
- TAA compliant
- GSA eligible

## QT X 800/800D

The Cambridge Qt X 800/800D control module is a sound masking generator, controller, third octave band equalizer and amplifier, with two auxiliary audio inputs to allow for distribution of audio from paging controllers and/or (background) music players. The Qt X 800/800D controls sound masking speakers/emitters in both direct-field and indirect (in-plenum) installations—or a mix of both. Each of the eight amplified output speakers/emitters can be independently adjusted for masking and aux audio levels and spectra. When multiple Qt X controllers are included in a single system audio inputs can be shared across all controllers via AVB or Dante (800/D).



## FEATURES

- Compatible with indirect loudspeakers and direct emitters
- Supports up to eight zones
- AVB or Dante (800/D) media network
- Two audio inputs for paging and music
- Contact closure integrates with fire alarm systems
- Front panel with LCD
- Panel lock via software control
- Auto-ramping
- Event scheduling
- Adjustable equalizer for masking and audio inputs
- Eight included non-correlated sound masking audio sources (one for each output)
- PoE+ Powered with optional 48V dc input
- Built-in clock with system NTP support
- Plenum mount bracket included; optional wall or rack mount bracket also available
- Dual network ports (media/control)
- Third-party control API/Ethernet
- CE marked, UL listed, and RoHS compliant
- Met Works with WELL licensing criteria for sound masking
- Covered by Biamp Systems' five-year warranty
- Manufactured in the U.S.A.
- TAA compliant
- GSA eligible

---

## QT X 805/805D

The Cambridge Qt X 805/805D control module is a sound masking generator, controller, third-octave band equalizer and amplifier, with two auxiliary audio inputs to allow for distribution of audio from paging controllers and/or (background) music players. The Qt X 800/800D controls sound masking speakers/emitters in both direct-field and indirect (in-plenum) installations—or a mix of both. Each of the eight amplified output speakers/emitters can be independently adjusted for masking and aux audio levels and spectra. When multiple Qt X controllers are included in a single system audio inputs can be shared across all controllers via AVB or Dante (800/D).



## FEATURES

- Compatible with indirect loudspeakers and direct emitters
- Supports up to eight zones of amplified speakers matched with eight zones of pre-amp outputs
- AVB or Dante (805/D) media network
- Two audio inputs for paging and music
- Contact closure integrates with fire alarm systems
- Front panel with LCD
- Panel lock via software control
- Auto ramping
- Event scheduling
- Adjustable equalizer for masking and audio inputs
- Eight included non-correlated sound masking audio sources (one for each output)
- Built-in clock with system NTP support
- Rack mount bracket included, optional wall mount bracket also available
- Dual network ports (media/control)
- Third-party control API/Ethernet
- CE marked, UL listed, and RoHS compliant
- Met Works with WELL licensing criteria for sound masking
- Covered by Biamp Systems' five-year warranty
- Manufactured in the U.S.A.
- TAA compliant and GSA eligible

## QT 100 CONTROL MODULE

The Qt 100 for sound masking is ideal for single zone spaces of up to 12,000 square feet (1,115 square meters). The Qt 100 is easily controlled from the module's front panel, making volume adjustments quick and easy.

Qt 100 generates sound masking, often misunderstood as white noise. Sound masking is at a frequency range more tuned to the frequency of human speech and is more acoustically pleasant than white noise.



### FEATURES

- 1 zone, up to 120 standard emitters
- Contact closure integrates with fire alarm systems
- Front panel control with LCD
- Panel lock (software)
- Surface mount only

### SPECIFICATIONS

- Width: 7" (17.8 cm)
- Height: 3.5" (8.9 cm)
- Depth: 0.875" (2.3 cm)
- Weight: 6 oz (170 g)
- Max. power consumption: 7 total watts
- Auxiliary audio inputs: 5000 ohms, dry line-level input (+4 dBu max)
- Power Supply Operating Voltage: Input: 100 - 240 VAC @ 0.6 Amp - Output: 24 VDC @ 1.0 Amp
- Certifications: FCC Part 15, RoHS Compliant, CE US STD 60065, CAN/CSA STC C22 2 60065, ETL Listed, Green Spec Listed
- Met Works with WELL licensing criteria for sound masking

---

## ACCESSORIES



### QT ROOM CONTROL

Allows users to adjust the sound masking level for an individual room or a space.

#### FEATURES

- Decora® centerplate, faceplate, and knob available in white
- Features 6 separate volume settings, from -10.0 dB to 0.0 dB (nominal)
- Bottom level setting installer selectable between Mute and -10.0 dB
- Controls up to 8 Standard Qt® Emitters or 14 Active Emitters
- Mounts in most standard electrical boxes, including open back low voltage brackets

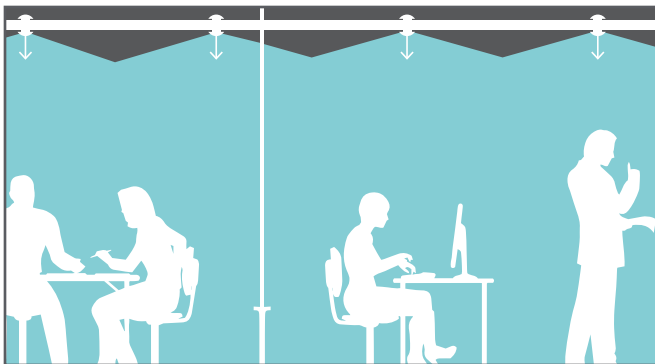
#### SPECIFICATIONS

- Width: 1.9" (4.8 cm)
- Height: 4.1" (10.4 cm)
- Depth: 2.2" (5.6 cm)
- Weight: 4.7 oz (133 g)
- No external power required
- Input/Output Wire Specifications: CAT 3, 5, 6 cables



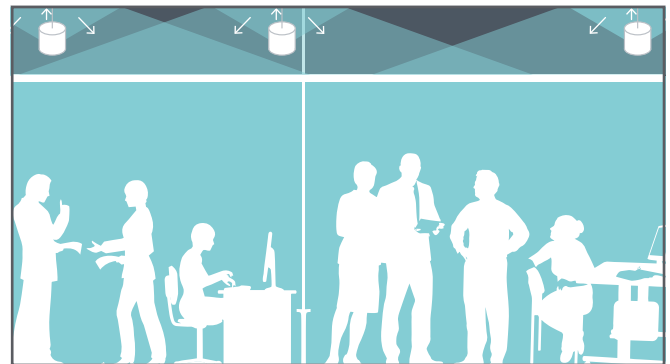
## HOW TO CHOOSE THE RIGHT SOUND MASKING SPEAKER

Biamp's most flexible sound masking solution overcomes any architectural or acoustical challenge by enabling both direct and indirect installations on a single unified network.



### DIRECT FIELD SOUND MASKING

Sound masking systems can be installed in a direct field position, in which the speakers point downwards from the ceiling and sound masking is emitted directly into the office space. This approach helps create a uniform and evenly distributed sound field.



### INDIRECT SOUND MASKING

Sound masking can also be installed in an indirect position, in which the speakers are hidden above the drop ceiling and the sound masking is pointed upwards and reflected off the ceiling deck and back into the environment. This approach keeps sound masking loudspeakers out of view, maintaining a room's aesthetics.

# DIRECT SOUND MASKING QT STANDARD EMITTERS AND QT ACTIVE EMITTERS

Qt® emitters feature patented technology that delivers the perfect balance of audio performance and deployment simplicity. Qt Active Emitters feature a powered design enabling sound masking, paging, and music with 17dB higher output, while Qt Standard Emitters offer a passive design for cost-effective sound masking.

## QT STANDARD EMITTERS

Qt Standard Emitters are the backbone of the Qt Quiet Technology Sound Masking System. Qt Standard Emitters are wide dispersion direct field speakers with 1.25" (3.17 cm) drivers and are smaller than a coffee mug. All Qt Emitters come in the adjustable format. These emitters deliver four uncorrelated audio channels, which provide uniform, unobtrusive sound masking. This feature, along with plug and play installation and easy configuration capability, make Qt X systems the most intelligently engineered and most effective sound masking systems on the market today for reducing noise distractions and protecting speech privacy.

## FEATURES

- Wide dispersion direct field speakers with 1.25" drivers
- Small driver size results in nearly 180 degree distribution of direct field sound masking
- Delivers four uncorrelated audio channels to prevent phasing/comb-filtering
- DIP switches reduce the volume level up to 9 dB in 3 dB increments for easy microzoning
- Comes standard with slip ring for acoustical tile mounting
- Suitable for use in air handling spaces and complies with UL 2043s.

## SPECIFICATIONS

- Height: 2.5" (6.4 cm)
- Diameter: 3.25" (8.3 cm)
- Mounting Hole Diameter: 2.675" (6.8 cm)
- Weight: 5.6 oz (159 g)
- Color: White
- Sound Masking Frequency Response: 200 Hz - 6300 Hz
- Masking Min - Max SPL: 30 dBA - 60 dBA @ 1 meter
- Cabling: Category UTP Cabling (8 conductor)
- Connections: Input / Output - RJ45 Modular Jack
- Met Works with WELL licensing criteria for sound masking

Specifications based on emitter array using published layout practices in conjunction with Qt Control Processor.





## QT ACTIVE EMITTERS

The Qt Active Emitter provides higher SPL and a broader frequency range than the Standard Qt Emitter, making it a good choice for workplaces in need of paging and background music capabilities in addition to masking.



## FEATURES

- Active electronics power the speaker
- Lower frequency extension down to 125 Hz octave band for sound masking and 115 Hz for paging and music
- 17 dB louder than previous direct field emitter offerings
- Suitable for use in air handling spaces and complies with UL 2043
- Delivers four uncorrelated audio channels to prevent phasing/comb-filtering
- Comes standard with a slip-ring mount for acoustical tile mounting
- Rear DIP switches reduce volume by up to 4.5 dB in 1.5 dB increments, if needed
- Use with Qt 300 or Qt 600 control modules

## SPECIFICATIONS

- Height: 3.5" (8.9cm)
- Diameter: 3.25" (8.3 cm)
- Mounting Hole Diameter: 2.675" (6.8 cm)
- Weight: 6.5 oz. (184 g)
- Color: white
- Masking Frequency Response: 100 Hz - 6.8 kHz
- Music / Paging Frequency Response: 105 Hz - 12 kHz
- Masking Min - Max SPL: 30 dBA to 60 dBA @ 1 meter
- Music / Paging Max SPL: 74 dBA @ 1 meter
- Cabling: Category UTP Cabling (8 conductor)
- Connections: Input / Output - RJ45 Modular Jack
- Met Works with WELL licensing criteria for sound masking

Specifications based on emitter array using published layout practices in conjunction with Qt Control Processor.

## ACCESSORIES



### PI-AE ACTIVE EMITTER POWER

Combines DC power from the Active Emitter Power Supply with the audio signal from the Qt X 300/600 module in order to provide a powered "signal" for the Active Emitter. There are two output ports that each support up to 25 Qt Active Emitters. It can be placed in the plenum and fits inside a standard 4x4 electrical enclosure. Met Works with WELL licensing criteria for sound masking.



### PS-AE-3 ACTIVE EMITTER POWER

Provides DC power to the Active Emitter through the Active Emitter Power Injector. It provides three 14/2 conductor cabling outputs that each power up to 50 Qt Active Emitters for a total of 150 Active Emitter maximum.\* Met Works with WELL licensing criteria for sound masking.

\* See Qt Active Emitter design guidelines for emitter count limitations.

# OPTIONAL EMITTER MOUNTING ACCESSORIES



## AE-UB-B & AE-UB-W UNIVERSAL BRACKET

For mounting emitters to a wall or ceiling. Rotates in 45-degree increments for optimal sound dispersion. Available in black or white.



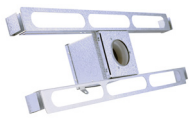
## AE-BB-B & AE-BB-W BEAM BRACKET

For mounting emitters to exposed I-beams or trusses. Available in black or white.



## PM-B & PM-W PENDANT MOUNT

Offers an attractive way to install emitters in an open or raised ceiling space and suspends them at the optimum height for best coverage. Includes pendant mount top and cylinder, cable, and cable box cover assembly. Available in black or white.



## CCM-1 CEILING CONDUIT MOUNT

For mounting the emitter into acoustic ceiling tile or drywall in regions with special fire and/or conduit requirements. Ceiling tile and drywall mounting rails included.



## DRYWALL MOUNT

For mounting emitters into drywall ceilings. Compatible with standard or Active Emitter. Kit with additional Drywall Roughin Bracket also available (specify DRB-1 KIT).



# INDIRECT SOUND MASKING LOUDSPEAKERS

The industry's first PoE (power over Ethernet) sound masking system. Every speaker can be individually configured to receive one or more of eight network audio channels, and the output of one or more of four sound masking generators. Privacy Manager software enables adjustments on a system-wide, per zone, or per speaker basis.

## DS1357 8 OHM PLENUM LOUDSPEAKER

The DS1357 contains a 5.25-inch diameter speaker mounted on axis. The compact enclosure includes a convoluted, flame-retardant, acoustical insert to further reduce standing waves and metallic resonance. The DS1357 sound masking speaker is designed for quick and easy installation into open structure architecture and above suspended ceilings. When suspended, the loudspeaker assembly offers a clean appearance with no exposed controls or wiring from below. The DS1357 provides uniform dispersion and is well suited for sound masking, paging and music signals.



## FEATURES

- Clean, streamlined appearance for use in open structure facilities and ceiling plenums
- Eight ohm speaker for use with Qt X 800 sound masking control module
- Four-point suspension for easy installation and fast leveling
- ETL listed to conform to UL 1480A and UL 2043

## SPECIFICATIONS

- Loudspeaker Type: 5.25" full range paper cone driver with one-inch voice coil diameter. 8 Ohm
- Power Handling: 10 Watts
- Nominal Impedance: 8 Ohms
- Nominal Dispersion: 160° H x 165° V
- Enclosure material: Cold rolled steel plate, thickness: 1 mm, powder coated
- Enclosure: Ported
- Sensitivity (2.83 Volts @ 1 meter on Axis): 91.9
- Frequency Response/-10dB down: 125Hz to 10,000Hz
- Connections: 2- Wire Pigtail
- Height: 5" (12.6 cm)
- Diameter: 8.5" (21.6cm)
- Weight: 4.2 lbs (1.9 kg)
- Certifications: UL 1480A and UL 2043
- Met Works with WELL licensing criteria for sound masking
- Cabling: 2 conductor 20AWG
- Driver Diameter: 5.25"
- Color: White or black

## DS1339 70V PLENUM LOUDSPEAKER

The DS1339 contains a 5.25-inch diameter speaker mounted on axis. The compact enclosure includes a convoluted, flame retardant, acoustical insert to eliminate standing waves and metallic resonance. The DS1339 sound masking speaker is designed for quick and easy installation into open structure architecture and above suspended ceilings. When suspended, the loudspeaker assembly offers a clean appearance with no exposed controls or wiring from below.



### FEATURES

- Clean, streamlined appearance for use in open structure facilities and in ceiling plenums
- Internal 70.7 volt transformer with rotary volume control
- Four-point suspension for easy installation and fast leveling
- ETL listed to conform to UL 1480A and UL 2043

### SPECIFICATIONS

- Loudspeaker Type: 5.25" full range paper cone driver with one-inch voice coil diameter, 70.7 Volt
- Power Handling: 4 Watts @ 70.7 V
- Nominal Impedance: 70.7 V / Secondary Equals 8 Ohms
- Nominal Dispersion: 160° H x 165° V
- Enclosure material: Cold rolled steel plate, thickness: 1 mm, powder coated
- Enclosure: Ported
- Sensitivity (2.83 Volts @ 1 meter on Axis): 91.9
- Frequency Response/-10dB down: 125Hz to 10,000Hz
- Transformer Taps: 1/8,1/4, 1/2,1,2,4 watts
- Connections: 2- Wire Pigtail
- Height: 4.5" (11.4 cm)
- Diameter: 8.5" (21.6 cm)
- Weight: 4.4 lbs. (2 kg)
- Certifications: UL 1480A and UL 2043
- Met Works with WELL licensing criteria for sound masking
- Cabling: 2 conductor 20AWG
- Driver Diameter: 5.25"
- Color: White or black

## DS1390

The DS1390 contains dual, horizontally opposed speakers which produce uniform sound dispersion ideally suited for reverberant under floor cavities and shallow ceiling plenums. An optional mounting bridge is available for use in ceiling plenums where conventional sound masking speakers are not applicable (specify DS1390B).



### FEATURES

- For use in floor cavities as shallow as 1-3/4"
- Optional bridge mount for use in ceiling plenums
- Internal 70-Volt transformer
- Performance-engineered dual drivers with tuned ports well suited for sound masking produce uniform 360-degree dispersion
- ETL listed to conform to UL1480 and CSA C22.2 60065
- Met Works with WELL licensing criteria for sound masking

## DS1398

The DS1398 contains dual, horizontally opposed speakers which produce uniform sound dispersion ideally suited for reverberant under floor cavities or shallow ceiling plenums. An optional mounting bridge is available for use in ceiling plenums where conventional sound masking speakers are not applicable (specify DSSSB-4).



### FEATURES

- For use in floor cavities as shallow as 1.75"
- Optional bridge mount for use in ceiling plenums
- Performance-engineered dual drivers with tuned ports well suited for sound masking produce uniform 360-degree dispersion
- ETL listed to conform to UL 1480 and CSA C22.2 62368-1
- Met Works with WELL licensing criteria for sound masking



## ADDITIONAL SOUND MASKING EMITTERS AND TRANSDUCERS

### DSMSK1 AND DSSD1-TI TACTILE TRANSDUCER

Economical hidden planar-source sound transducer designed for sound masking in drywall applications.

#### FEATURES

- For use in drywall ceilings
- UL-listed and complies with UL 2043
- Use DSSD1-TI for masking, paging, and music and DSMSK1 for masking only
- Met Works with WELL licensing criteria for sound masking



### DS1320 QT ACTIVE EMITTER, FUSION EDITION

This version of the Qt Active Emitter can be connected to a Qt X 800 via plenum rated AWG 2 conductor cable and a terminal block connector to create individually networked emitters.

## NETWORK SWITCHES

The network switches are expertly designed for the Cambridge Qt X sound masking system. Provided as an easily available option to work with Qt X sound masking applications, these network switches provide PoE power for Qt X 800 sound masking or NPX paging stations. Each switch is also optimized to pass background audio and paging content between Qt X controllers in a system. These network switches are an essential component that simplifies installation and enhances the performance of Cambridge Qt X.



### NMS-NG10GPX-AVB

The Biamp NMS-NG10GPX-AVB (NETGEAR model M4250-10G2XF-POE+) is a pro-grade managed switch designed from the ground-up for 1G networked AV systems. The switch provides ten 1G ports and two 10G SFP+ ports that all support AVB and Dante. Eight of the ports are PoE+ capable with 240W of total power budget. The NMS-NG10GPX-AVB, preconfigured by Biamp, comes with AVB and Dante support enabled right out of the box, making it ready for use with networked Qt X sound masking systems. Met Works with WELL licensing criteria for sound masking.



### NMS-NG26GPX-AVB

The Biamp NMS-NG26GPX-AVB (NETGEAR model M4250-26G4XF-POE+) is a pro-grade managed switch designed from the ground-up for 1G networked AV systems. The switch provides 26 1G ports and four 10G SFP+ ports that all support AVB and Dante. 24 of the ports are PoE+ capable with 480W of total power budget. The NMS-NG26GPX-AVB, preconfigured by Biamp, comes with AVB and Dante support enabled right out of the box, making it ready for use with networked Qt X sound masking systems.

# AMPLIFIERS

## REVAMP1120T

The REVAMP1120T is a unique and versatile design with 1 x 120 watts output power @ 100 volts (or @ 4 ohms). This class-D amplifier with a built-in galvanic separated toroidal output transformer free of external influences and disturbances. Convection-cooled and excluded from cooling fans this amplifier is reliable, maintenance-free, silent and dust-free.



## REVAMP2120T

The REVAMP2120T is a 2-channel digital power amplifier that provides 2 x 120 watts output power @ 100 volts or @ 4 ohms, that can easily be bridged into a powerful 240 watts @ 100 volts or 8-ohm single amplifier. This convection cooled class-D amplifier has no built-in fans, ensuring it stays noiseless and dust-free.



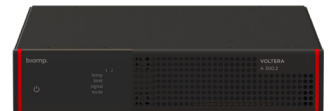
## REVAMP4120T

The REVAMP4120T is a professional 4-channel digital power amplifier with 4 x 120 watts output power @ 100 volt (or @ 4 ohms), but the unit is also bridgeable to 2 x 240 watts @ 100 volt (or @ 4 ohms). The unit incorporates a highly efficient SMPS power supply, outputs with efficient Class D output topology and output transformers.



## VOLTERA A 300.2

The Voltera A 300.2 is a compact, two-channel, half-rack power amplifier with a total output power of 300 watts. The amplifier channels can be individually selected to drive 150 watts per channel into 4 ohm, 8 ohm, 70 V, or 100 V. Power sharing is also supported, allowing up to 300 watts to be delivered by any channel. Met Works with WELL licensing criteria for sound masking.



## VOLTERA A 300.4

The Voltera A 300.4 is a compact four-channel half-rack power amplifier with a total output power of 300 watts. The amplifier channels can be individually selected to drive 75 watts per channel into 4 ohm, 8 ohm, 70 V, or 100 V. Power sharing is also supported, allowing up to 150 watts to be delivered by any channel. Met Works with WELL licensing criteria for sound masking.



## VOLTERA A 600.2

The Voltera A 600.2 is a compact two-channel half-rack power amplifier with a total output power of 600 watts. The amplifier channels can be individually selected to drive 300 watts per channel into 4 ohm, 8 ohm, 70 V, or 100 V. Power sharing is also supported, allowing up to 600 watts to be delivered by any channel. Energy Star certification ensures that these amplifiers consume less power without compromising on their powerful sound distribution and reinforcement capabilities. Met Works with WELL licensing criteria for sound masking.



## VOLTERA A 600.4

The Voltera A 600.4 is a compact four-channel half-rack power amplifier with a total output power of 600 watts. The amplifier channels can be individually selected to drive 150 W per channel into 4 ohm, 8 ohm, 70 V, or 100 V. Power sharing is also supported, allowing 300 watts to be delivered by any channel. Energy Star certification ensures that these amplifiers consume less power without compromising on their powerful sound distribution and reinforcement capabilities. Met Works with WELL licensing criteria for sound masking.





## NPX PAGING

Cambridge Qt X sound masking is fully compatible with NPX network paging stations. NPX paging stations are easily configured in the Qt X software application, enabling a convenient way to add the full breadth of NPX paging features to a Qt X sound masking solution. The NPX platform includes priority level paging, pre-loaded and customized preambles, pre-recorded messages and the ability to record directly to the device for future playback. All NPX models—whether handheld or gooseneck, tabletop or wall-mount—feature both AVB and Dante interfaces, making them compatible with AVB- or Dante-configured Qt X systems. NPX stations have met Works with WELL licensing criteria for sound masking.



### NPX G1040

The NPX G1040 is a 4-button paging station with a gooseneck microphone, capable of playing back 4 configurable page codes.



### NPX G1100

The NPX G1100 is a 10-button paging station with a gooseneck microphone, capable of playing back 999 configurable page codes.



### NPX H1040

The NPX H1040 is a 4-button paging station with a handheld microphone, capable of playing back 4 configurable page codes.



### NPX H1100

The NPX H1100 is a 10-button paging station with a handheld microphone, capable of playing back 999 configurable page codes.

# TARGETED SPEECH PRIVACY SYSTEMS



## QT CONFERENCE ROOM EDITION

Designed to protect speech privacy in conference rooms, meeting rooms, and board rooms. The kit includes a control module, privacy signs, emitters, and all of the necessary cables.

## FEATURES

- Control module and two privacy signs provide clear indication that the system is activated
- Easy integration with control systems via contact closure with status feedback
- Smooth sound masking ramp up and ramp down to limit disruptions
- Can be turned on and off for meetings or left running at all times
- Out-of-the-box support for conference rooms with up to 40 ft (12 m) of exposed wall

## SPECIFICATIONS

### CONTROL MODULE

- Width: 8.31" (21.1 cm)
- Height: 4.44" (11.3 cm)
- Depth: 1.06" (2.7 cm)
- Weight: 0.7 lb (300 g)
- Power supply: compatible with 100V-240V AC power mains
- Power consumption: entire system uses less than 7 watts
- Not compatible with Qt Active Emitters

### PRIVACY SIGNS

- Width: 3.5" (9 cm)
- Height: 4.5" (11.3 cm)
- Depth: 0.19" (0.48 cm)
- Weight: 0.1 lb (50 g)
- Power supply: powered from the control module via 20AWG 2-conductor plenum rated cabling (included)

### QT EMITTERS (8)

- Height: 2.5" (6.4 cm)
- Diameter: 3.25" (8.3 cm)
- Weight: 5.6 oz (159 g)
- Power supply: powered via control module via plenum rated Category cabling (included)
- Met Works with WELL licensing criteria for sound masking





## QT PATIENT PRIVACY SYSTEM

Designed to protect speech privacy in medical office reception areas, exam rooms, and pharmacy line-up areas. The kit includes a control module, privacy signs, emitters, and all of the necessary cables.

### FEATURES

- Control module and privacy signs provide clear indication that the system is activated and privacy is being protected
- Premium, minimalist design style seamlessly fits in with any design

### SPECIFICATIONS

#### CONTROL MODULE

- Width: 8.31" (21.1 cm)
- Height: 4.44" (11.3 cm)
- Depth: 1.06" (2.7 cm)
- Weight: 0.7 lb (300 g)
- Power supply: compatible with 100V-240V AC power mains
- Power consumption: entire system uses less than 7 watts

#### PRIVACY SIGNS

- Width: 3.5" (9 cm)
- Height: 4.5" (11.3 cm)
- Depth: 0.19" (0.48 cm)
- Weight: 0.1 lb (50 g)
- Power supply: powered from the control module via 20AWG 2-conductor plenum rated cabling (included)

#### QT EMITTERS (8)

- Height: 2.5" (6.4 cm)
- Diameter: 3.25" (8.3 cm)
- Weight: 5.6 oz (159 g)
- Power supply: powered via control module via plenum rated Category cabling (included)
- Met Works with WELL licensing criteria for sound masking

# EAVESDROPPING AND SCIF PROTECTION

DynasoundPro eavesdropping protection systems are designed to prevent deliberate and intentional attempts to intercept private and confidential conversations.



## DS2400/DS2408

### PIPE, DUCT, AND WALL MASKERS

Securing of pipes and ducts is critical when DIAM and DCID requirements for SCIF need to be met. The DS2400/DS2408 may be used to ensure eavesdropping protection of pipes and ducts that breach the perimeter of a secure environment by resonating these penetrations, filling them with sound masking and/or misinformation. Additionally, they resonate the plane of any wall along the perimeter of a secure environment

### DS2400 FEATURES

- Fills pipes, square ducts and round ducts, and walls with sound masking
- Lightweight and easy to install
- Does not cause pressure drop or alter air flow when applied to ductwork
- Does not require separate transformer
- Individual level adjustment
- Durable plenum-rated metal housing

### DS2400 SPECIFICATIONS

- Width: 5" (12.7 cm)
- Height: 1.75" (4.45 cm)
- Length: 5" (12.7 cm)
- Weight: 2 lbs. (907.2 g)
- Color: Black
- Sound Masking Frequency Response: 100 Hz – 8 kHz
- Cabling: 18 AWG 2 conductor
- Impedance: 8 ohm driver
- Transformer: Primary 70.7v, Secondary 8 ohms
- Switch Positions: 1/8,1/4, 1/2,1,2,4 watts
- Met Works with WELL licensing criteria for sound masking

## DS2500/2508

### WINDOW, DOOR, AND WALL MASKERS

Securing of windows, doors, and walls is critical when DIAM and DCID requirements for SCIF need to be met. DS2500 series sound maskers are used to these areas against human and electronic eavesdropping by applying full bandwidth sound masking. The units may be attached to the interior side of any window, door or in some cases, wall surfaces. They are effective against laser eavesdropping techniques, as well as the use of parabolic microphones

### DS2500 FEATURES

- Protects windows, doors, and walls against human and electronic eavesdropping techniques
- Does not require separate transformer
- Available with or without rotary switch
- Lightweight and easy to install
- UV rated adhesive mount
- Accepts a mix of sound masking, music, and misinformation signals

### DS2500 SPECIFICATIONS

- Width: 5" (12.7 cm)
- Height: 1.75" (4.45 cm)
- Length: 5" (12.7 cm)
- Weight: 2 lbs.
- Color: Beige
- Driver: Non-conventional security type
- Transformer: Primary 70.7v, Secondary 8 ohms
- Switch Positions: 1/8,1/4, 1/2,1,2,4 watts
- Met Works with WELL licensing criteria for sound masking

## DS2408 FEATURES

- Fills pipes, square ducts and round ducts, and walls with sound masking
- Lightweight and easy to install
- Does not cause pressure drop or alter air flow when applied to ductwork
- Durable plenum-rated metal housing

## DS2408 SPECIFICATIONS

- Width: 6.25" (15.9 cm)
- Height: 1.75" (4.45 cm)
- Length: 5.5" (13.9 cm)
- Color: Black
- Sound Masking Frequency Response: 100 Hz - 8 kHz
- Cabling: 18 AWG 2 conductor
- Impedance: 8 ohm driver
- Transformer: Primary 70.7 v, Secondary 8 ohms
- Met Works with WELL licensing criteria for sound

## DS2508 FEATURES

- Protects windows, doors, and walls against human and electronic eavesdropping techniques
- Lightweight and easy to install
- UV rated adhesive mount
- Accepts a mix of sound masking, music, and misinformation signals

## DS2508 SPECIFICATIONS

- Width: 3" (7.6 cm)
- Height: 1" (2.54 cm)
- Length: 2.5" (6.6 cm)
- Weight: .25 lbs.
- Color: Beige
- Driver: Contact Driver
- Impedance: 8 ohms
- Met Works with WELL licensing criteria for sound masking



# SOUND MASKING PRODUCT LIST

Product Type	Part Number	SKU	Description
Control Modules	911.0823.900	Qt 100	Qt-100, 1-zone sound masking control module
Control Modules	911.0078.900	Qt X 300	Qt X Controller, 3 Qt Outputs
Control Modules	911.0218.900	Qt X 300D	Qt X Controller 3 Qt Outputs, Dante
Control Modules	911.0069.900	Qt X 600	Qt X Controller, 6 Qt Outputs
Control Modules	911.0217.900	Qt X 600D	Qt X Controller, 6 Qt Outputs, Dante
Control Modules	911.0216.900	Qt X 800	Qt X Controller, (8) 8 Ohm Outputs
Control Modules	911.0220.900	Qt X 800D	Qt X Controller, (8) 8 Ohm Outputs, Dante
Control Modules	911.0085.900	Qt X 805	Qt X Controller, (8) 8 Ohm / Pre amp Outputs
Control Modules	911.0219.900	Qt X 805D	Qt X Controller, (8) 8 Ohm / Pre amp Outputs, Dante
Standard Emitters	911.0889.900	E-A-B-16-4	Standard Emitters, Black, 4 pack, with 4 x 16 ft black plenum rated cables
Standard Emitters	911.0890.900	E-A-B-25-4	Standard Emitters, Black, 4 pack, with 4 x 25 ft black plenum rated cables
Standard Emitters	911.0891.900	E-A-B-30-4	Standard Emitters, Black, 4 pack, with 4 x 30 ft black plenum rated cables
Standard Emitters	911.0893.900	E-A-W-16-4	Standard Emitters, White, 4 pack, with 4 x 16 ft white plenum rated cables
Standard Emitters	911.0894.900	E-A-W-25-4	Standard Emitters, White, 4 pack, with 4 x 25 ft white plenum rated cables
Standard Emitters	911.0895.900	E-A-W-30-4	Standard Emitters, White, 4 pack, with 4 x 30 ft white plenum rated cables
Active Emitters	911.0896.900	E-P-B-16-4	Active Emitters, Black, 4 pack, with 4 x 16 ft black plenum rated cables
Active Emitters	911.0897.900	E-P-B-25-4	Active Emitters, Black, 4 pack, with 4 x 25 ft black plenum rated cables
Active Emitters	911.0898.900	E-P-B-30-4	Active Emitters, Black, 4 pack, with 4 x 30 ft black plenum rated cables
Active Emitters	911.0899.900	E-P-W-16-4	Active Emitters, White, 4 pack, with 4 x 16 ft white plenum rated cables
Active Emitters	911.0900.900	E-P-W-25-4	Active Emitters, White, 4 pack, with 4 x 25 ft white plenum rated cables
Active Emitters	911.0901.900	E-P-W-30-4	Active Emitters, White, 4 pack, with 4 x 30 ft white plenum rated cables
Active Emitters	911.0806.900	DS1320-B-4	Active Emitter, White - 4 Pack for use with 8 ohm Qt X output. Cables not included
Active Emitters	911.0807.900	DS1320-W-4	Active Emitter, White - 4 Pack for use with 8 ohm Qt X output. Cables not included
Loudspeaker	911.0708.900	DS1339B	70V plenum loudspeaker - black
Loudspeaker	911.0709.900	DS1339W	70V plenum loudspeaker - white
Loudspeaker	911.0712.900	DS1357B	8 Ohm plenum loudspeaker - black
Loudspeaker	911.0713.900	DS1357W	8 Ohm plenum loudspeaker - white
Loudspeaker	911.0836.900	DS1375	In-ceiling downward firing loudspeaker. 70V and 8 ohm compatible
Loudspeaker	911.0840.900	DS1390	70V low-profile loudspeaker with clip
Loudspeaker	911.0876.900	DS1390B	70V low-profile loudspeaker with tile bridge
Loudspeaker	911.0841.900	DS1398	8 Ohm low-profile loudspeaker with clip
Loudspeaker	911.0877.900	DS1398B	8 Ohm low-profile loudspeaker with tile bridge
Paging Stations	911.1808.900	NPX G1040	4-button convenience paging station with gooseneck microphone, tabletop or wall mount
Paging Stations	911.1839.900	NPX G1100	10-button convenience paging station with gooseneck microphone, tabletop or wall mount
Paging Stations	911.1840.900	NPX H1040	4-button convenience paging station with handheld microphone, tabletop or wall mount
Paging Stations	911.1841.900	NPX H1100	10-button convenience paging station with handheld microphone, tabletop or wall mount
Eavesdropping Protection	911.0808.900	DS2400	70V duct, pipe, conduit, wall masker for SCIF / secure rooms
Eavesdropping Protection	911.0809.900	DS2408	8 Ohm, pipe, conduit, wall masker for SCIF / secure rooms
Eavesdropping Protection	911.0810.900	DS2500	70V window, door, wall masker for SCIF / secure rooms
Eavesdropping Protection	911.0811.900	DS2508	8 Ohm, window, door, wall masker for SCIF / secure room
Eavesdropping Protection	911.0815.900	DS2530	70V window, door, wall masker for SCIF/secure rooms. W/vol. control & retractable cord.
Individual Sound Masking System	330.0071.900	SQT-1	Sonet Qt, individual sound masking system for up to 200 sq ft.
Individual Sound Masking System	911.0863.900	SQT-E	Sonet Qt extension kit, providing an additional 200 sqft of coverage. For SQT-1 only
Network Switch	911.1966.900	Biamp NMS-NG10GPX-AVB	AVB-enabled Netgear 10-port 1G switch, 8-ports w/ PoE+, 240W
Network Switch	911.1976.900	Biamp NMS-NG26GPX-AVB	AVB-enabled Netgear 26-port 1G switch, 24-ports w/ PoE+, 480W
Mounts/Brackets	911.0826.900	AE-BB-B	Beam mounting bracket - Black - compatible with all Qt emitters
Mounts/Brackets	911.0827.900	AE-BB-W	Beam mounting bracket - White - compatible with all Qt emitters
Mounts/Brackets	911.0828.900	AE-UB-B	Universal mounting bracket - black; compatible with all Qt Emitters
Mounts/Brackets	911.0829.900	AE-UB-W	Universal mounting bracket - white; compatible with all Qt Emitters
Mounts/Brackets	911.0695.900	CCM-1	4-pack of ceiling conduit mounts for Qt emitters
Mounts/Brackets	368.0302.900	DM	Plastic drywall mount for all Qt emitters [does not include hole saw]

# SOUND MASKING PRODUCT LIST

Product Type	Part Number	SKU	Description
Mounts/Brackets	520.0017.900	DRB-1	Drywall rough-in bracket for Qt emitters
Mounts/Brackets	911.0875.900	DRB-1 KIT	Drywall rough-in bracket for Qt emitters with plastic drywall mount (DM) included
Mounts/Brackets	552.0204.900	DSSD1-BR12	SD-1 Mounting Bracket, 12-inch on-center
Mounts/Brackets	552.0205.900	DSSD1-BR16	SD-1 Mounting Bracket, 16-inch on-center
Mounts/Brackets	552.0206.900	DSSD1-BR24	SD-1 Mounting Bracket, 24-inch on-center
Mounts/Brackets	449.0060.900	DSSD1-TI	SD-1 Solid Drive speaker for drywall
Mounts/Brackets	911.0852.900	DSSSB-4	Tile Bridge for DS1390 or DS1398
Mounts/Brackets	911.0962.900	PM-B	Pendant Mount - black (priced individually, but sold in packs of 4)
Mounts/Brackets	911.0963.900	PM-W	Pendant Mount - white (priced individually, but sold in packs of 4)
Mounts/Brackets	909.1846.900	Qt X PLMT-KT	Qt X Controller Plenum Mount Kit
Mounts/Brackets	909.1845.900	Qt X RMT-KT	Qt X Controller Rack Mount Kit
Mounts/Brackets	909.1844.900	Qt X WMT-KT	Qt X Controller Wall Mount Kit
Control Panels	911.0883.900	DSRMP-4	4 zone volume control panel for 70V systems
Control Panels	911.0887.900	DSRMP-8	8 zone volume control panel for 70V systems
Sound Masking Accessories	911.0833.900	DS11x12	Amplifier Shelf
Sound Masking Accessories	911.0844.900	DS2022	Return air grill cover / attenuator
Sound Masking Accessories	911.0802.900	DS-CP8201	Contact closure module for use with DS3002
Sound Masking Accessories	911.0850.900	DSQC-10	In-Room Volume Control for 70V systems
Sound Masking Accessories	911.0888.900	DSTS10POE	Touch Screen Panel PC PoE 10" & Mount (pass-through item-no discount)
Sound Masking Accessories	911.0853.900	DSVC-1	Attenuator for Volume Control Panel
Sound Masking Accessories	368.0300.900	EC-B	Black cap for Standard Emitters only, for custom painting
Sound Masking Accessories	368.0301.900	EC-W	White cap for Standard Emitters only, for custom painting
Sound Masking Accessories	322.0482.900	FCC-1	Female/female coupler
Sound Masking Accessories	552.0208.900	HS-ACT	68 mm acoustical ceiling tile hole saw
Sound Masking Accessories	552.0209.900	HS-DW	76 mm drywall hole saw
Sound Masking Accessories	330.0050.900	PI-AE	Active emitter power injector
Sound Masking Accessories	330.0057.900	PS-4	Qt-100 power supply & cord
Sound Masking Accessories	330.0061.900	PS-AE-3	Active emitter power supply
Sound Masking Accessories	911.0861.900	QT-RC2	In Room Volume Control with Decora Style Plate for the Qt-100 only
Sound Masking Accessories	911.0969.900	QT-RC3	In Room Volume Control with Decora Style Plate for the Qt-300 and Qt-600
Sound Masking Accessories	310.0200.900	SP-1-2	Two way splitter - for use with Standard emitters only
Sound Masking Accessories	310.0201.900	SP-1-4	Four way splitter - for use with Standard emitters only
Sound Masking Accessories	911.0651.900	REVAMP1120T	Class D amplifier 1 x 120 Watts (70/100 Volts or RMS @ 4 Ohms), convection cooled, 1 U, 19" rackmount
Sound Masking Accessories	911.0653.900	REVAMP2120T	2 Channel class D amplifier 2 x 120 Watts (70/100 Volts or RMS @ 4 Ohms) or in bridge mode 1 x 240 Watts (70/100 Volts or RMS @ 8 Ohms), convection cooled, 1 U, 19" rackmount
Sound Masking Accessories	911.0656.900	REVAMP4120T	4 Channel class D amplifier 4 x 120 Watts (70/100 Volts or RMS @ 4 Ohms) or in bridge mode 2 x 240 Watts (70/100 Volts or RMS @ 8 Ohms), combined convection and fan cooling, 2 U, 19" rackmount
Sound Masking Accessories	911.1948.900	Voltera A 300.2	Two-channel, 300-watt analog amplifier
Sound Masking Accessories	911.1949.900	Voltera A 300.4	Four-channel, 300-watt analog amplifier
Sound Masking Accessories	911.1946.900	Voltera A 600.2	Two-channel, 600-watt analog amplifier
Sound Masking Accessories	911.1947.900	Voltera A 600.4	Four-channel, 600-watt analog amplifier

# SOUND MASKING PRODUCT LIST

Product Type	Part Number	SKU	Description
Amplifiers	911.0651.900	REVAMP1120T	Class D amplifier 1 x 120 Watts (70/100 Volts or RMS @ 4 Ohms), convection cooled, 1 U, 19" rackmount
Amplifiers	911.0653.900	REVAMP2120T	2 Channel class D amplifier 2 x 120 Watts (70/100 Volts or RMS @ 4 Ohms) or in bridge mode 1 x 240 Watts (70/100 Volts or RMS @ 8 Ohms), convection cooled, 1 U, 19" rackmount
Amplifiers	911.0656.900	REVAMP4120T	4 Channel class D amplifier 4 x 120 Watts (70/100 Volts or RMS @ 4 Ohms) or in bridge mode 2 x 240 Watts (70/100 Volts or RMS @ 8 Ohms), combined convection and fan cooling, 2 U, 19" rackmount
Amplifiers	911.1948.900	Voltera A 300.2	Two-channel, 300-watt analog amplifier
Amplifiers	911.1949.900	Voltera A 300.4	Four-channel, 300-watt analog amplifier
Amplifiers	911.1946.900	Voltera A 600.2	Two-channel, 600-watt analog amplifier
Amplifiers	911.1947.900	Voltera A 600.4	Four-channel, 600-watt analog amplifier
Sound Masking System	911.0714.900	QT-CRE	Qt Conference Room Edition
Sound Masking System	911.0825.900	QT-HCE	Qt Conference Patient Privacy System
Sound Masking Controller	911.0818.900	DS3002	Networked sound masking, paging and music processor
Sound Masking Speaker	449.0060.90	DSSD1-TI	Solid Drive Sound Masking Speaker for Drywall
Emitters	911.0849.900	DSMSK1	MSK-1 Solid Drive Sound Masking Speaker for Drywall
Cabling	424.0167.900	CC-100-B	100' Plenum Rated Cables - Black
Cabling	424.0168.900	CC-100-W	100' Plenum Rated Cables - White
Cabling	424.0165.900	CC-10-B	10' Plenum Rated Cables - Black
Cabling	424.0166.900	CC-10-W	10' Plenum Rated Cables - White
Cabling	424.0172.900	CC-25-B	25' Plenum Rated Cables - Black
Cabling	424.0173.900	CC-25-W	25' Plenum Rated Cables - White
Cabling	424.0174.900	CC-30-B	30' Plenum Rated Cables - Black
Cabling	424.0175.900	CC-30-W	30' Plenum Rated Cables - White
Cabling	424.0176.900	CC-50-B	50' Plenum Rated Cables - Black
Cabling	424.0177.900	CC-50-W	50' Plenum Rated Cables - White
Cabling	424.0178.900	CC-75-B	75' Plenum Rated Cables - Black
Cabling	424.0179.900	CC-75-W	75' Plenum Rated Cables - White
Cabling	424.0180.900	CC-AE-400-PC	14 AWG cable, 2 Conductor, plenum rated. 400 foot spool
Cabling	650.0100.900	DSPC1	1-foot Category 5 patch cable
Cabling	650.0101.900	DSPC7	7-foot Category 5 patch cable
Cabling	415.0050.900	DSPC-B	18 AWG cable, 2 Conductor, plenum rated - Black
Cabling	415.0052.900	DSPC-W	18 AWG cable, 2 Conductor, plenum rated - White
Cabling	415.0053.900	DSPC-Y	18 AWG cable, 2 Conductor, plenum rated - Yellow



A man with a beard, wearing an orange long-sleeved shirt and brown trousers, is sitting at a white desk. He is looking down at a document or laptop on the desk. On the desk, there is a white mug, a pair of headphones, and some papers. A red fire extinguisher is visible on the floor next to the desk. The desk is positioned in front of a large window with a black frame.

A woman with blonde hair, wearing a beige wrap-style top and blue jeans, is standing and talking to another woman. She is holding a white document or folder. She is gesturing with her right hand towards a potted plant on a small table. She is wearing black loafers.

A woman with long dark hair, wearing a blue and white striped dress, is sitting on a green tufted sofa. She is looking towards the standing woman. She is holding a smartphone in her hands. She is wearing blue bow-tie shoes. The sofa has wooden armrests.

A blue upholstered armchair with wooden armrests is positioned next to the standing woman. It is facing towards the center of the room. The chair has a simple, modern design.

A low wooden coffee table with a black metal frame is in the foreground. On the table, there is a white coffee cup on a saucer, a smartphone, and a small potted plant. The table is on a light-colored rug.



**biamp.**

9300 SW Gemini Drive  
Beaverton, OR 97008 USA  
Phone: +1 503.641.7287

[biamp.com](http://biamp.com)

©2025 Biamp Systems