



**b.**  
extraordinary

**POCKET GUIDE**  
FEBRUARY 2025

An Introduction to the Latest  
Innovations from Biamp

**biamp.**

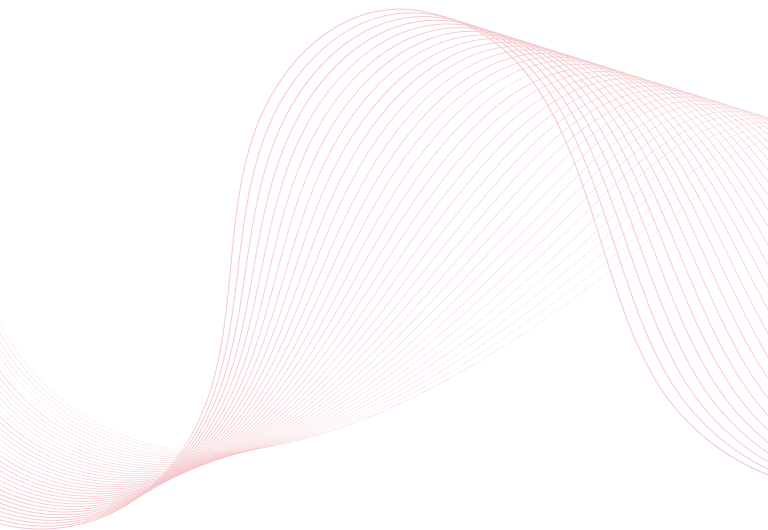
# WE WORK FOR YOU

---

At Biamp, our mission is simple: we work for you. We empower true human connection in every space with extraordinary audiovisual solutions that empower you to communicate, collaborate, and create without barriers.

Every Biamp solution is engineered with the user in mind. From seamless integration to intuitive operation, we ensure our technology fits effortlessly into your environment. Our commitment to innovation drives us to anticipate your needs, delivering cutting-edge solutions that evolve with your challenges.

Above all, we're here to support you. With industry-leading customer service and a global network of trusted partners, we help everyone focus on what matters most. Even when the lights go down, we work for you.





# BIAMP WORKPLACE

With Biamp Workplace, the future of AV systems management is now at your fingertips. For both managers and end users of AV and conferencing equipment, this unprecedented cloud-based platform makes the most extraordinary audiovisual experiences come to life in any professional environment.

Biamp Workplace helps you take full command of your entire AV system, enabling centralized, system-wide monitoring, management, scheduling, reporting, and actionable insights across an extensive and ever-expanding array of industry-leading Biamp technologies.







## COMPATIBLE WITH BIAMP WORKPLACE

- Tesira™
- Devio™ SCX
- Evoko™
- **NEW:** Voltera™ D and D M
- **NEW:** Cambridge™ Qt X
- **NEW:** MAX Connect
- **NEW:** NPX
- **NEW:** Parlé™ VBC 2800
- **NEW:** Workplace Bridge



## KEY FEATURES:

- **NEW:** The Workplace Bridge makes older Tesira DSP products compatible with the many features and benefits of Biamp Workplace
- Proactive monitoring lets you anticipate potential issues before they arise, with automated alerts, system health check, and device status tracking
- Remote management, firmware updates, and device reboots reduce on-site interventions
- Easily access essential device information at a glance, including online status, model and description, firmware version, serial number, and IP address
- Data-driven, actionable insights to optimize system performance, including utilization by location, time of day, room style, type of equipment, and more
- Remote Launch allows users to automatically optimize a room before a big meeting, or schedule it to happen every Sunday before people arrive at the office
- The highest security standards, including end-to-end encryption, secure data storage, and continuous monitoring, ensure all sensitive information stays protected

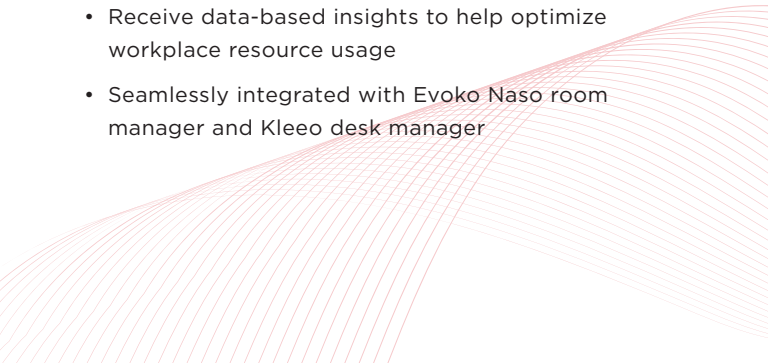
	Management & Monitoring License	Booking License	Booking Plus License
Device Management & Monitoring			
Scheduling			
Scheduling calendar integration			
MAP PRICING	\$7.50 / MONTH	\$5 / MONTH	\$10 / MONTH

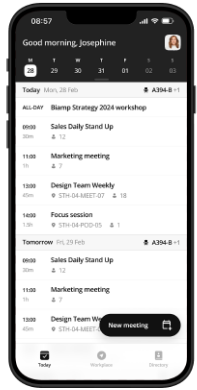
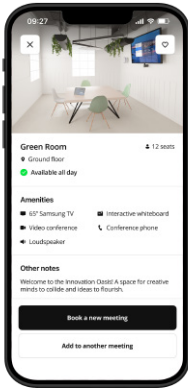
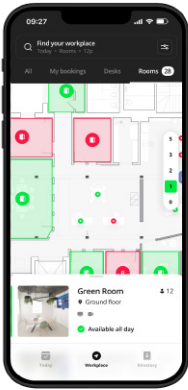
# WORKPLACE BOOKING APP

---

A powerful component of the Biamp Workplace ecosystem, the Workplace Booking App makes it fast and easy for users to book rooms, desks, parking places, or any other shared space, delivering real-time availability and seamless calendar integration for a smooth and efficient booking experience every time, from anywhere.

## KEY FEATURES:

- The intuitive floorplan view provides an easy method for quickly viewing which rooms, shared desks, and parking spaces are available
  - With the Workplace bookings tool, admins have insight into all meeting room availability for easy scheduling in support of numerous staff members
  - Filter room availability searches based on seating capacity and AV capabilities
  - Synchronize with Microsoft Outlook or Google Calendar
  - The intuitive home screen provides a clear overview of room and desk bookings
  - Receive data-based insights to help optimize workplace resource usage
  - Seamlessly integrated with Evoko Naso room manager and Kleeo desk manager
- 



# TESIRA

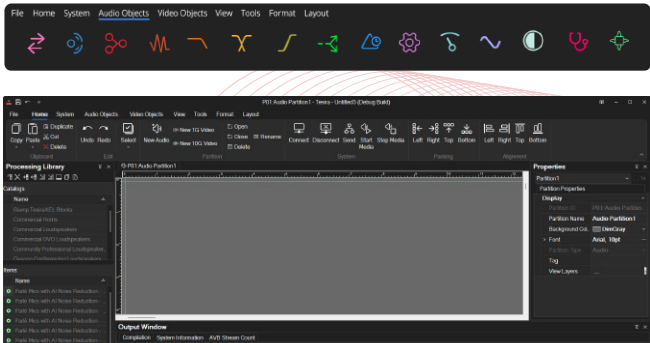


Our flagship platform, Tesira is the leading integrated networked AV processing and distribution solution. Sophisticated, adaptive DSP is the core of what Biamp does, and Tesira delivers total flexibility and scalability to optimize any AV space across any venue.

With a team dedicated to Tesira improvements through software and firmware updates, new features are being developed and delivered regularly, solving more customer needs, faster.

## NEW:

This year the Tesira software user interface will experience the most significant enhancement in more than a decade. With a clean look familiar to any Windows user, plus sharp, easy-to-find icons, and “light mode,” the new Tesira UI will greatly simplify navigation and make programming faster and more intuitive.

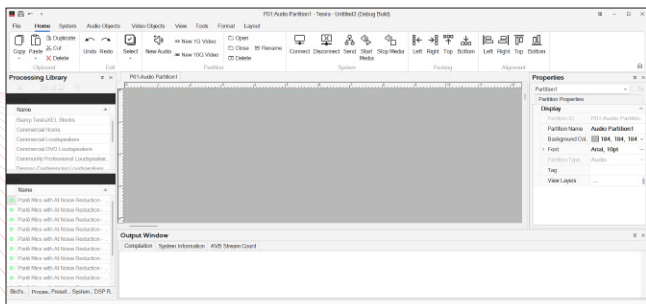




In 2024, we delivered numerous Tesira enhancements.

TESIRA 4.8	TESIRA 4.9
<ul style="list-style-type: none"><li>• Added Windows Update for FORTÉ X firmware updates</li><li>• Microsoft Teams Rooms telemetry for FORTÉ X</li><li>• NPX paging station pages all zones when some are busy</li><li>• Various stability improvements</li></ul>	<ul style="list-style-type: none"><li>• Added new Voltera D amplified loudspeaker controllers</li><li>• Updated Voltera amplifier blocks</li><li>• Various stability improvements</li></ul>

TESIRA 4.10	TESIRA 4.11
<ul style="list-style-type: none"><li>• New FORTÉ X separated port mode to isolate traffic</li><li>• Added synchronized Dante channel naming</li><li>• Added automatic network clock selection</li><li>• Added gain reduction meter to NPX paging stations</li><li>• Added NPX 10-button mode</li><li>• Increased audio meter hold time to 10 seconds</li><li>• Improved Parlé mic performance when using Launch</li><li>• Various stability improvements</li></ul>	<ul style="list-style-type: none"><li>• Added Tesira EX-USB model</li><li>• Added Voltera D M models</li><li>• Added multi-channel blocks</li><li>• Added control export to Impera Project Designer</li><li>• Streamlined document mode</li><li>• Added Parle AI processing library</li><li>• Enhanced Biamp Launch loudspeaker automated EQ</li><li>• Added TTP for Launch</li><li>• Added support for 7 more Desono models in Launch</li><li>• Various stability improvements</li></ul>



# PARLÉ VBC 2800 CONFERENCE BAR

The Parlé™ VBC 2800 is an all-in-one conferencing bar featuring Biamp Audio Intelligence and Biamp Video Intelligence that delivers high performance AV experiences across all meeting spaces up to and including large conference rooms.

The VBC 2800 features a new dual 50 MP + 8 MP ePTZ camera system that clearly sees everyone, even further down long conference tables. The ePTZ system also features up to 16x digital zoom, and AI auto framing technology automatically switches between telephoto and wide-angle cameras for the best shot. With integrated Acoustic Echo Cancellation (AEC) and AI Noise Reduction, the VBC 2800 uses a 27-microphone array and Biamp Beamtracking™ technology to actively track and intelligently mix conversations from around the room.

Equipped with Biamp Launch™, The VBC 2800 analyzes the room's acoustic performance and then optimizes the bar for extraordinary audio to adjust for the room's unique specifications.



Hear and be heard with smart stereo speakers

8MP 120° HFoV sees everyone in the room



Automatic configuration with Launch technology



## KEY FEATURES:

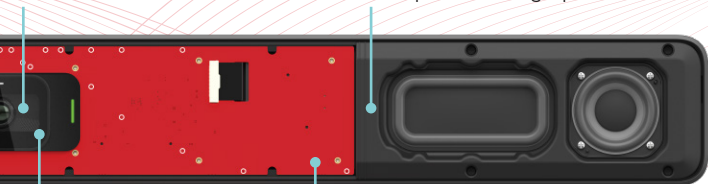


**LAUNCH**

- Beamtracking technology uses a 27-microphone array to actively track and intelligently mix conversations
- AI noise reduction algorithm for clear voice reproduction
- Low distortion, smart stereo speakers
- Biamp Launch for one touch automatic tuning that delivers the best sound in every room
- Automatic privacy shutter and LED indications for mute status and camera activity
- Fully digital pan / tilt / zoom (ePTZ) with 16x digital zoom
- 8 MP 120° HFoV ultrawide camera for people closer to the camera
- 50 MP 86° HFoV camera for people furthest away from the camera
- AI auto framing technology to keep participants in frame
- Network port for control integration
- Analog audio input for playing local in-room content
- Discrete output for Assistive Listening Systems
- Easy connectivity with a UC system or BYOM hub with a single USB cable

Bring people closer with 50 MP camera

Quick and easy installation with multiple mounting options



Maintain privacy with automatic camera cover

Capture every voice with Beamtracking and 27-microphone array

# PARLÉ CBC 2500

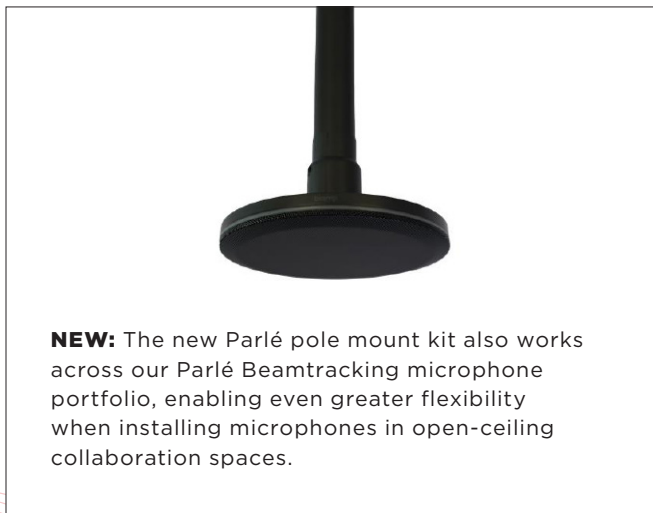
---

The Parlé CBC 2500 CM is a ceiling or pole mounted, all-in-one conferencing bar for collaboration spaces where wall mounting might be difficult. Featuring a sleek design that mounts from any open plan ceiling or support pole with two discreet cables, the CBC 2500 is quickly and cleanly installed with two mounting points and decorative covers.



## KEY FEATURES:

- **NEW:** The Parlé pole mount kit provides another option for easy, attractive installation
- Certified for Microsoft Teams and Zoom
- Beamtracking technology actively tracks and intelligently mixes conversations AI noise reduction algorithm for clear voice reproduction
- Biamp Launch for one touch automatic tuning that delivers the best sound in every room
- Low distortion, smart stereo speakers
- AI noise reduction algorithm for clear voice reproduction



**NEW:** The new Parlé pole mount kit also works across our Parlé Beamtracking microphone portfolio, enabling even greater flexibility when installing microphones in open-ceiling collaboration spaces.

# VIDI 280

## CONFERENCING CAMERA

---

The Vidi™ 280 is a stand-alone conferencing camera, ideal across all meeting spaces up to and including large rooms, that easily connects to room experience systems like UC computes or BYOM hubs via USB-C. The Vidi 280 features a dual 50 MP + 8 MP ePTZ camera system that can see everyone in large conference rooms, capturing crisp detail at farther distances. With AI auto framing technology that automatically switches between telephoto and wide-angle cameras for the best shot, the ePTZ system also features up to 16x digital zoom.

### KEY FEATURES:

- 4K, fully digital pan / tilt / zoom (ePTZ)
- 50 MP 86° HFoV camera for participants farther from the camera
- 8 MP 120° HFoV ultrawide camera for participants closer to the camera
- 16x digital zoom
- AI auto framing technology supports meeting spaces up to and including large rooms
- Activity and privacy state LED indicator
- 5 element microphone array
- USB 3.0 powered USB-C connector, cable included
- Top of display and under display mounts included



# CONFERENCE ROOM BUNDLES

---



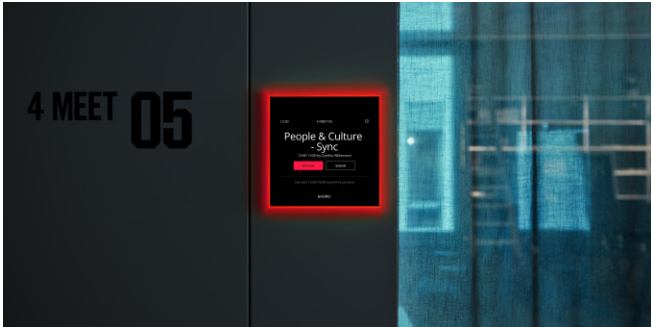
Transform your conference rooms and optimize collaboration with our expanded lineup of all-in-one AV bundles. Each pre-configured solution is certified for Microsoft Teams Rooms and Zoom, and includes renowned Biamp digital signal processing; Beamtracking microphones, which automatically focus on any active talker; and now even more premium loudspeaker choices.

Medium and large room bundles allow the flexibility to choose the option that best suits your space. They include a Tesira processor, a Parlé ceiling or tabletop microphone, and the choice of loudspeakers according to your installation requirements:

- Desono CIC6LP ceiling mount
- Desono DXS5 surface mount
- Desono ENT206 column mount
- Desono EX-S8 surface mount
- Desono MASK6C surface mount
- Desono P6SM pendant

Small room bundles include a Parlé 2500 video conferencing bar and a UC compute solution. Plus, every bundle features Biamp Launch, the groundbreaking technology that analyzes any room's acoustics and automatically optimizes audio performance—all at the touch of a button.

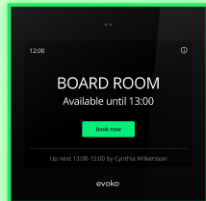
# EVOKO ROOM AND DESK MANAGERS



Evoko Naso and Kleeo are cloud-connected, highly intuitive room and desk management solutions that streamline the process of booking meeting rooms and shared desk spaces. Their overall simplicity saves valuable time and reduces scheduling conflicts, leading to more productive workdays.

## NASO

Naso has been updated with a streamlined user interface, faster performance, and more comprehensive, and actionable, data-based insights into room usage.



## KLEEO

Kleeo is the perfect desk booking device for any office using flexible, shared workstations. The device's overall simplicity saves valuable time and reduces scheduling conflicts.





## KEY FEATURES:

- Compatibility with Google Workspace—in addition to Microsoft Outlook—means room scheduling can now be accomplished through two of the most popular cloud-based calendar applications
- Naso and Kleeo now share a single admin tool for fast and easy room and desk scheduling—Biamp Workplace Admin
- Green illumination indicates a room or desk is available, red when in use, and amber when between bookings
- Compatible with RFID cards or tags for effortless user authentication

# **VOLTERA AMPLIFIED LOUDSPEAKER CONTROLLERS**

---

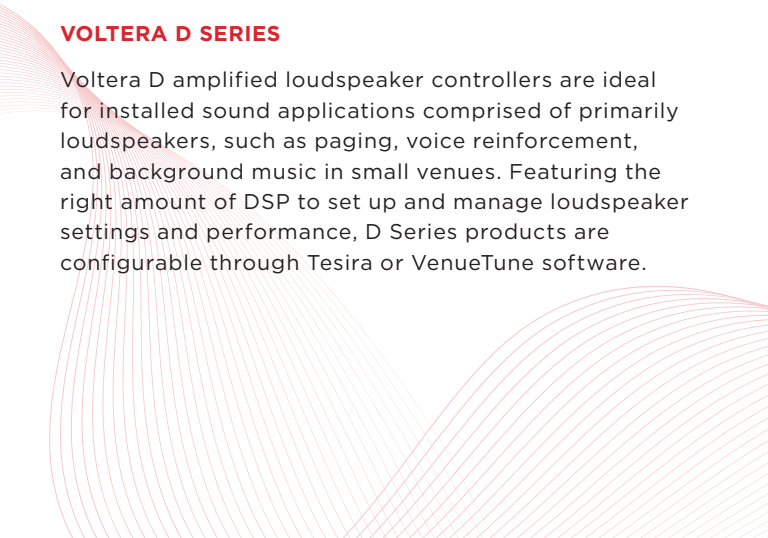
Voltera D M and D Series amplified loudspeaker controllers are packed with sophisticated yet simple tools for tuning rooms, and a host of other one-of-a-kind features that drive reliability and audio performance, as well as space and cost savings.

## **VOLTERA D M SERIES**

Previously unavailable in this segment, Voltera D M networked, amplified loudspeaker controllers feature the full performance of a standalone Tesira Digital Signal Processor (DSP), built into the 1 RU chassis, providing the capacity to host, select, configure, and tune a complete Tesira-based system. Configurable through Tesira or VenueTune software, Voltera D M amplified loudspeaker controllers seamlessly combine amplification and processing into a single, cost-effective networked solution ideal for small-to-medium sized venues such as hotels, restaurants, retailers, and houses of worship.

## **VOLTERA D SERIES**

Voltera D amplified loudspeaker controllers are ideal for installed sound applications comprised of primarily loudspeakers, such as paging, voice reinforcement, and background music in small venues. Featuring the right amount of DSP to set up and manage loudspeaker settings and performance, D Series products are configurable through Tesira or VenueTune software.





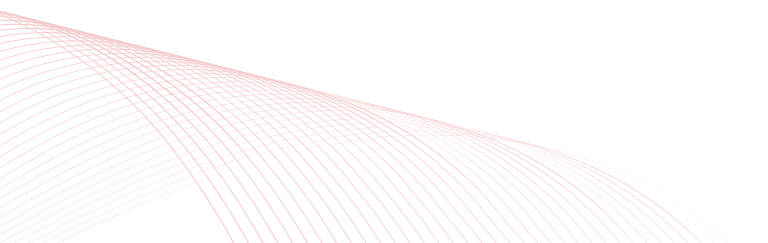
## VOLTERA D M MODELS

- Voltera D 600.4M: 600 W / 4 channels
- Voltera D 1200.4M: 1200 W / 4 channels
- Voltera D 2400.4M: 2400 W / 4 channels
- Voltera D 1200.2M: 1200 W / 2 channels
- Voltera D 2400.2M: 2400 W / 2 channels
- **NEW:** Voltera D 4800.2M
- **NEW:** Voltera D 4800.4M



## VOLTERA D MODELS

- Voltera D 1200.8: 1200 W / 8 channels
- Voltera D 2400.8: 2400 W / 8 channels
- Voltera D 1200.4: 1200 W / 4 channels
- Voltera D 2400.4: 2400 W / 4 channels
- **NEW:** Voltera D 4800.4



## **VOLTERA D AND D M KEY FEATURES:**

- The ALAMOS speaker library automatically configures Tesira and VenueTune profiles for hundreds of Cambridge, Desono, and Commercial Audio loudspeakers
- Compact and powerful—up to 8 channels (D Series), or 4 channels (D M Series) in just one RU
- Compatible with AVB, Dante, and AES67 network protocols
- Accurate raised cosine EQ below 160 Hz
- Group-controlled raised cosine EQ making it attractive for large systems
- Redundant media interface
- Power share up to +100% per channel
- Lo-Z or Hi-Z per channel to support hybrid systems

## **NEW, MORE POWERFUL MODELS**

For large venues that require more amplifier output, the Voltera lineup now includes the D 4800.2M, D 4800.4M, and D 4800.4 models, which feature 4,800 watts of power—the perfect amplified loudspeaker controllers for large venues that require higher power, such as sports arenas, large auditoriums, and more.

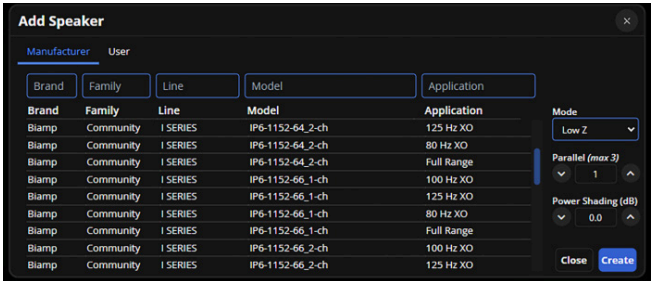




# VENUETUNE 2.0

VenueTune enhancements for Voltera D and D M series amplified loudspeaker controllers represent a significant advancement in professional audio system management. VenueTune combines robust configuration protection with industry-first features for real-time performance monitoring and intelligent power management.

VenueTune 2.0 delivers comprehensive tools for system analysis, optimization, and protection, including real-time headroom monitoring, advanced speaker profile creation, and guaranteed breaker trip prevention. With flexible network deployment options and redundant audio paths, VenueTune 2.0 ensures reliable operation while simplifying system setup and maintenance through integrated tools.

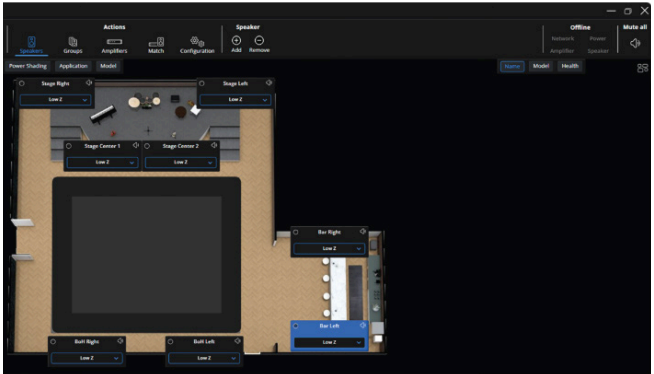


## EFFORTLESS CONFIGURATION

The new ALAMOS loudspeaker profile library supports more than 200 Biamp models, covers all crossover and transformer tap options, and allows easy control of complex settings for a faster commissioning process.

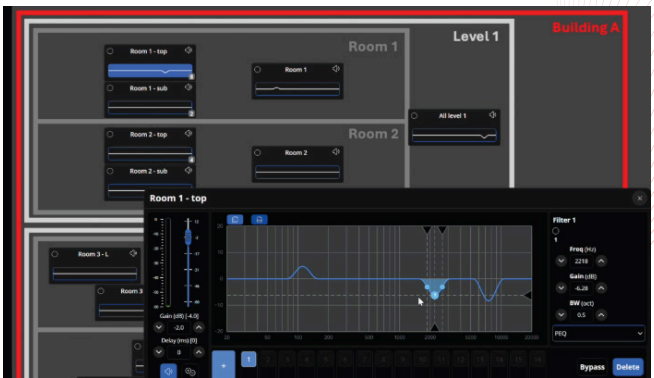
## EASY FLOORPLAN INTEGRATION

Effortlessly upload 2D floorplans for an enhanced visualization of optimal speaker placement.



## INTUITIVE TUNING, TOTAL CONTROL

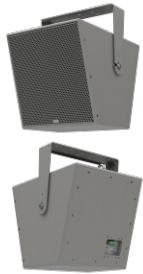
The intuitive user interface enables powerful system tuning and comprehensive performance monitoring.



# AISLE LOUDSPEAKERS

## COMMERCIAL CCA-80

The CCA-80 constant coverage aisle loudspeaker is an asymmetric, full-range, 3-way horn loudspeaker ideal for paging and background music. It produces a rectangular coverage pattern and long throw distance that delivers exceptional speech intelligibility in the challenging acoustic environment of long aisles or concourses.



## KEY FEATURES:

- Purpose-built for long aisles and concourses in warehouses, sports complexes, shopping malls, hotels, themed entertainment venues, and more
- Asymmetric vertical waveguide with up to 4:1 throw ratio for extended coverage
- Efficient design with 70V/100V transformers for cost-effective sound reinforcement
- Unique coverage patterns provide extended distance without significant cost escalation
- Dual speaker option provides additional mounting flexibility and reduced total system costs
- Specialty high-sensitivity voice models tailored for extremely large spaces

## COMMERCIAL CCA-80D

Designed to address the center aisle gap, the CCA-80D bundles dual constant coverage asymmetric loudspeakers with a mounting bracket for fast, low cost installations.



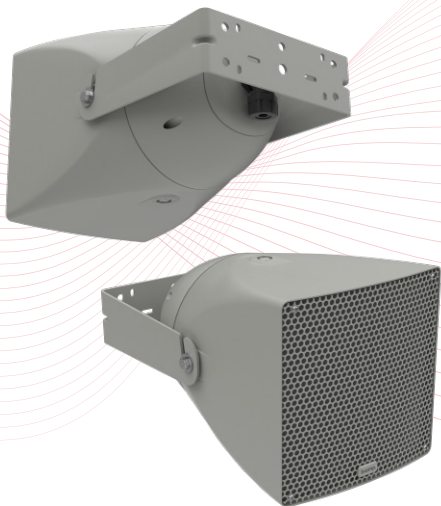


# COMMUNITY R.15-3696

The Community™ R.15-3696 is a full-range, three-way triaxial loudspeaker that delivers excellent voice intelligibility and quality music playback, similar to the best-selling R.35-3896 loudspeaker, but in a more compact housing ideal for large installations where cost is a primary consideration.

## KEY FEATURES:

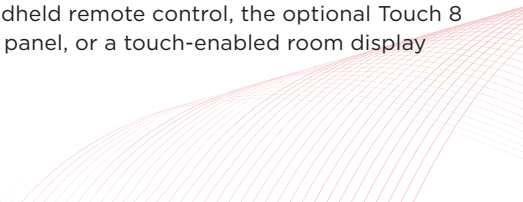
- Full-range background music and clearly intelligible voice paging
- Ideal for sports field applications, stadium concourses, warehouses, gymnasiums, and other similar highly reverberant spaces
- Weather-resistant construction delivers reliable performance in areas exposed to outdoor elements



# MAX CONNECT

---

MAX Connect is an easy-to-use, yet powerful, content-sharing and collaboration solution that turns any space into a bring-your-own-meeting (BYOM) room. Now participants can use their own devices to share and interact with content, control room AV equipment, and join UC meetings using their app of choice — including Microsoft Teams and Zoom. With MAX Connect, users have unprecedented control over their collaboration experience, leading to more productive meetings and enhanced engagement, ideation, and decision making.

- Dual screen support enables MAX Connect to extend participant content onto two screens in a single meeting room—a common scenario in today’s collaboration environments.
  - Connect up to 30 participants in a single session—ample capacity for large meetings and classrooms.
  - Up to six pieces of content can be shared simultaneously: the digital whiteboard and content from as many as five presenters
  - Built-in tools allow users to annotate shared content and the virtual whiteboard
  - Shared content is rebroadcasted to participant devices, letting them select, view, and annotate content on their own devices
  - Participants can connect and control room peripherals wirelessly, letting them make UC calls from the device using their favorite platform
  - Collaboration sessions can be managed through the included handheld remote control, the optional Touch 8 MAX control panel, or a touch-enabled room display
- 



## FEATURE HIGHLIGHTS:

- **NEW:** Enhanced Teams integration
- Users can connect through a browser, desktop apps, standard casting protocols, or with an HDMI cable
- Up to five participants can share content simultaneously (the whiteboard makes six)
- Every participant can interact with the shared content on their own personal device—making it easy to zoom-in or focus on specific points of interest
- The room's camera stream can be replaced by participants' own cameras to frame themselves, a wall-mounted whiteboard, or other objects
- Meeting room display peripherals can be controlled through the included handheld remote or with the optional Biamp Touch 8 MAX touch panel

## MAX CONNECT BYOM ROOM COMPONENTS:

- The MAX Connect BYOM Room System with included remote control
- Optional Touch 8 MAX for peripheral control and session moderation



# EASYCONNECT MPX 200

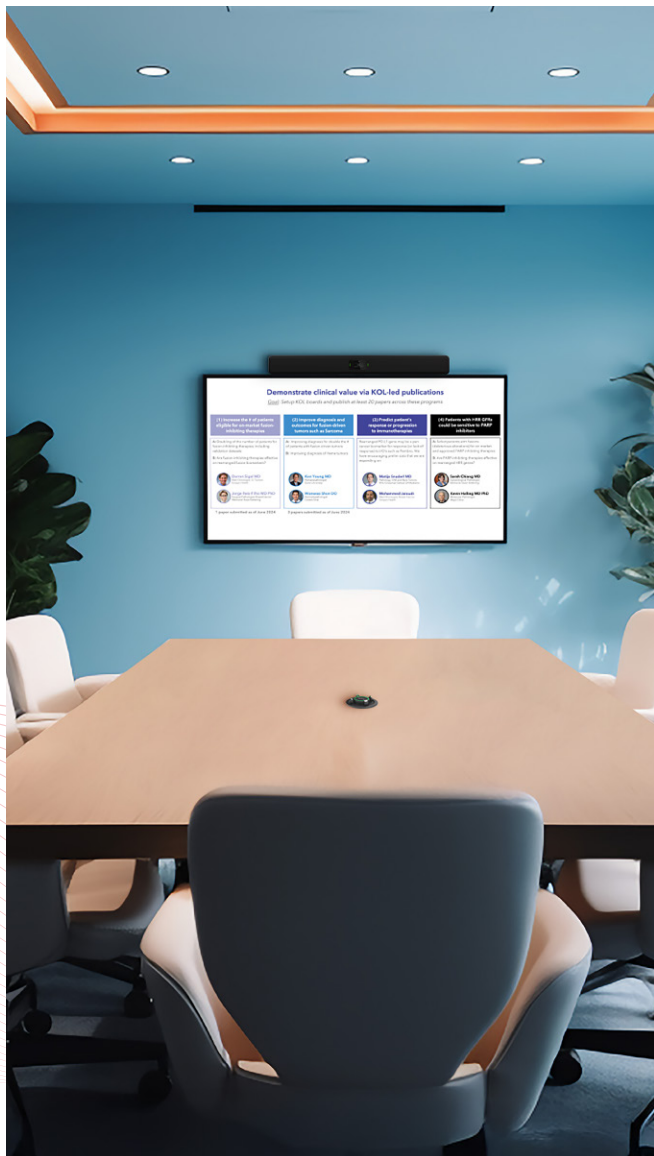
---

The EasyConnect MPX 200 is an innovative screen sharing hub with integrated charging, and cable management that also enables control of connected meeting room equipment. Simply connect the USB-C cable to your device and, with a simple press of a button, start sharing and take control of a room's AV peripherals.

## KEY FEATURES:

- Easily share your screen and audio with full control of room equipment such as camera, loudspeakers and microphones
- Vivid and helpful colors let connected participants control who is sharing their screen and who has control of the connected in-room peripherals
- Connect to any of the most popular UC platforms like Microsoft Teams, Zoom and Google Meet





# VOCIA

---

Vocia™ is a highly reliable and scalable platform for all your paging, background music, and emergency communication needs. Vocia offers clarity and intelligibility, ensuring your messages are delivered as intended.



## KEY FEATURES:

- **NEW:** The Vocia TTS-2 is a unified text-to-speech server that combines core text-to-speech functionality and nurse call integration capabilities in a single offering. It comes pre-loaded with 130 natural-sounding voice fonts, providing a comprehensive solution for voice communications systems
- Monitor, log and manage components remotely, and quickly add or replace non-functioning hardware, expanding the system as needed
- With a decentralized network architecture, there is no single point of system failure—if any device on the network goes offline, the remainder of the system will function as normal
- Vocia complies with the regulatory requirements of EN54-16 and NFPA Part 72 for emergency notifications



# CAMBRIDGE QT X SERIES



The Cambridge Qt X series offers both direct-field and in-plenum functionality to address the full spectrum of sound masking needs. Qt X controllers are available in 3-zone, 6-zone, and 8-zone models, and utilize existing direct-field and indirect emitters.

The Qt X platform is designed to seamlessly integrate with Tesira systems and NPX paging solutions to enable unified programming and deployment of sound management applications.





## KEY FEATURES

- **NEW:** Compatible with Biamp Workplace cloud-based AV management platform
- **NEW:** The Qt X As Built Report software feature automates the generation of comprehensive PDF documentation for complete Qt X sound masking system configurations, delivering clear information that's ideal for commissioning verification, facilities management, and system maintenance
- **NEW:** Support for up to 250 Qt X sound masking controllers on a single network
- **NEW:** Optimized system performance delivers a more responsive user experience
- **NEW:** Bulk update capability streamlines initial setup and configuration, and improved fault display simplifies troubleshooting
- Logic-based and scheduled paging, output fault monitoring, and single button paging mode for 10 button NPX paging stations
- Supports both direct-field and indirect sound masking
- Seamless compatibility with convenience paging microphones and background music sources
- System architecture enables greater reliability, easy expansion, and network capabilities
- Enables out-of-the-box compatibility with any building's life-safety system
- AVB and Dante compatibility allows for easy integration with a broad range of devices
- Compatible with existing direct Qt emitters and indirect loudspeakers and eavesdropping solutions



# CROWD MICS

Crowd Mics™ empowers audience interaction by turning smartphones into wireless mics, eliminating the need to pass a microphone around the room. It allows presenters and attendees to connect on a personal level, while moderators maintain full control over the conversation.

## KEY FEATURES:

- Streamlined and simplified UI
- Join the event with
  - Touch
  - Code
  - Scan
- Supports up to 1,000 attendees
  - Connect to a cellular network
  - Connect to a guest network
  - Connect to a corporate network
- Cloud-based event licensing is free
- Push to talk—no need to hold a button while sharing your voice
- Haptic feedback vibrates when it's your turn to talk
- Users can customize the interface with their corporate branding
- Online events now included at no charge—makes joining even easier— no WiFi connection required





# biamp.

To learn more about these products, scan the code below.



## CONTACT US:

9300 S.W. Gemini Dr.  
Beaverton, OR 97008  
USA

biampinfo@biamp.com  
biamp.com

1.800.826.1457  
+ 1.503.641.7287

