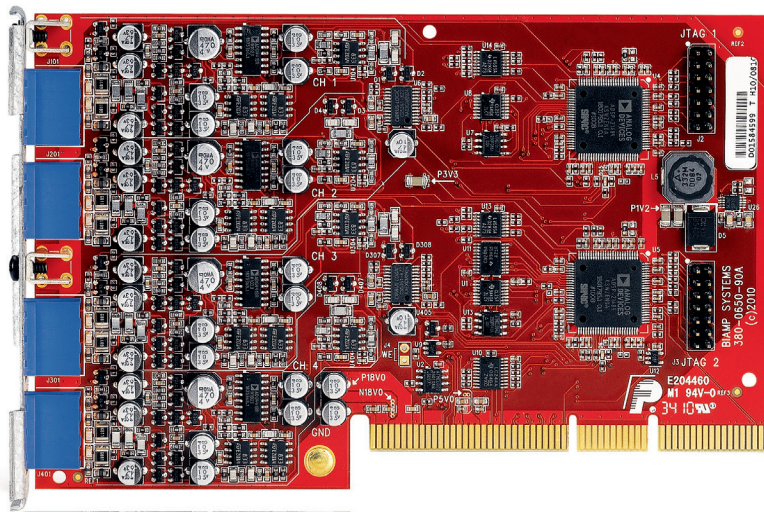


DATA SHEET

TESIRA® SAC-4

4-CHANNEL MIC/LINE MODULAR INPUT CARD WITH ANC



The Tesira® SAC-4 is a modular analog input card for use with Tesira SERVER or SERVER-IO devices. Each SAC-4 provides 4 channels of mic or line level audio input with Ambient Noise Compensation. The inputs are electrically balanced and provided on plug-in barrier strip connectors. The card features a new Biamp algorithm, AmbientSense™, which intelligently distinguishes ambient noise from program material or announcements, thus greatly improving processing performance over traditional ambient noise compensation. Software control is separated into separate blocks for mic/line inputs and ANC processing. This allows the system designer to use the inputs independent of the ANC processing, and apply the ANC algorithm to inputs from a different part of the system.

BENEFITS

- Modular I/O cards can be mixed-and-matched both in Tesira SERVER and Tesira SERVER-IO
- Ability to process inputs and ANC separately allows noise compensation to be applied to local or remote inputs
- Outstanding noise compensation performance with next generation AmbientSense algorithm

FEATURES

- 4 channels of balanced mic or line level input
- 4 channels of Ambient Noise Compensation using Biamp's proprietary AmbientSense algorithm
- Automatically adjusts levels for program material or announcements, based on changes in ambient level
- Up to four "sense" inputs per card
- Does not use processing resources from SERVER or SERVER-IO DSP
- RoHS compliant and AES grounded
- Covered by Biamp Systems' 5-year warranty

ARCHITECTS & ENGINEERS SPECIFICATION

The ambient noise compensation shall be a 4-channel card designed exclusively for use with Tesira Server devices. The modular card shall provide 4 balanced mic or line level inputs on plug-in barrier strip connections. Software configuration and control for each input shall include: gain with clip indicator, phantom power on/off, mute, level, and signal invert. The ambient noise compensation algorithm shall be configured and controlled separately in software. Programmable parameters shall include: threshold, response time and compensation. The modular input card shall incorporate AES48-2005 Grounding and EMC practices and shall be compliant with the RoHS Directive. Warranty shall be 5 years. The input card shall be Tesira SAC-4.

TESIRA SAC-4 SPECIFICATIONS

Frequency Response (20Hz-20kHz @ +4dBu):	+0/-0.25dB	Phantom Power:	+48 VDC (7mA/input)
THD+N (20Hz-20kHz @ +4dBu, AEC off):		Cross Talk (channel to channel @ 1kHz):	
@ 0dB Gain (line level):	< 0.006%	@ 0dB Gain, +4dBu In	< 85dB
@ 54dB Gain (mic level):	< 0.055%	@ 54dB Gain, -50dBu In	< 75dB
EIN (20Hz-20kHz, 66dB Gain, 150Ω):	< -125dBu	Sampling Rate:	48kHz
Dynamic Range (20Hz-20kHz, 0dB):	> 108dB	A/D Converters:	24-bit
Input Impedance (balanced):	8kΩ	Compliance:	AES48-2005 Grounding and EMI practices RoHS Directive (Europe)
Maximum Input:	+24dBu		
Maximum Gain:	66dB		
Input Gain Range (6dB Steps):	0 - 66dB		