

SYSTEM DESIGN GUIDE

AMPHITHEATER

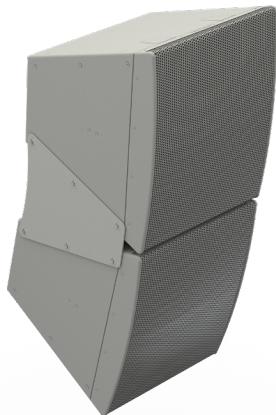
COMMUNITY LVH-900

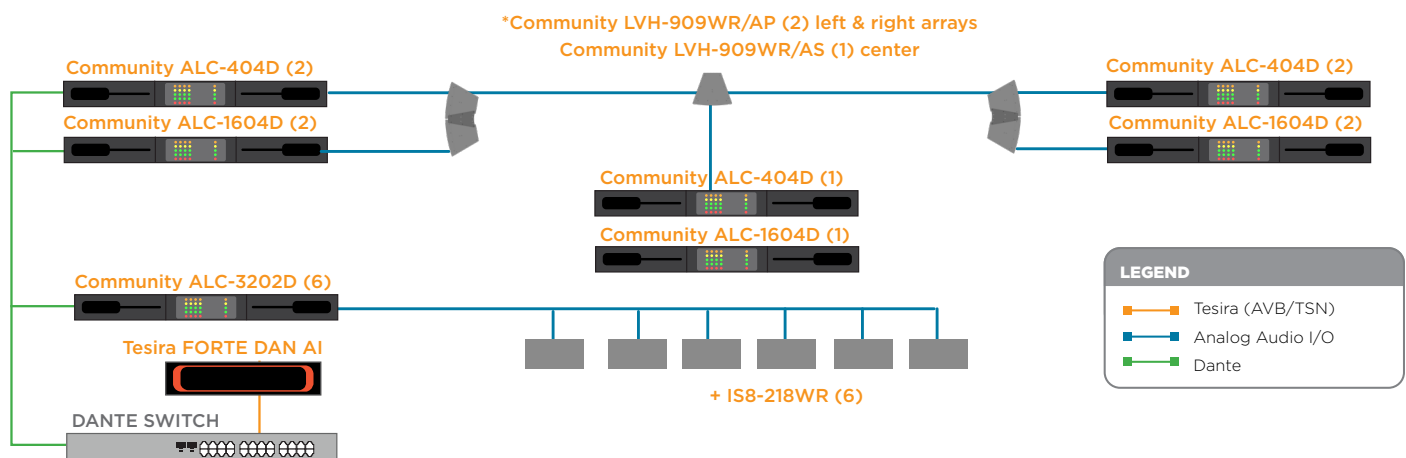
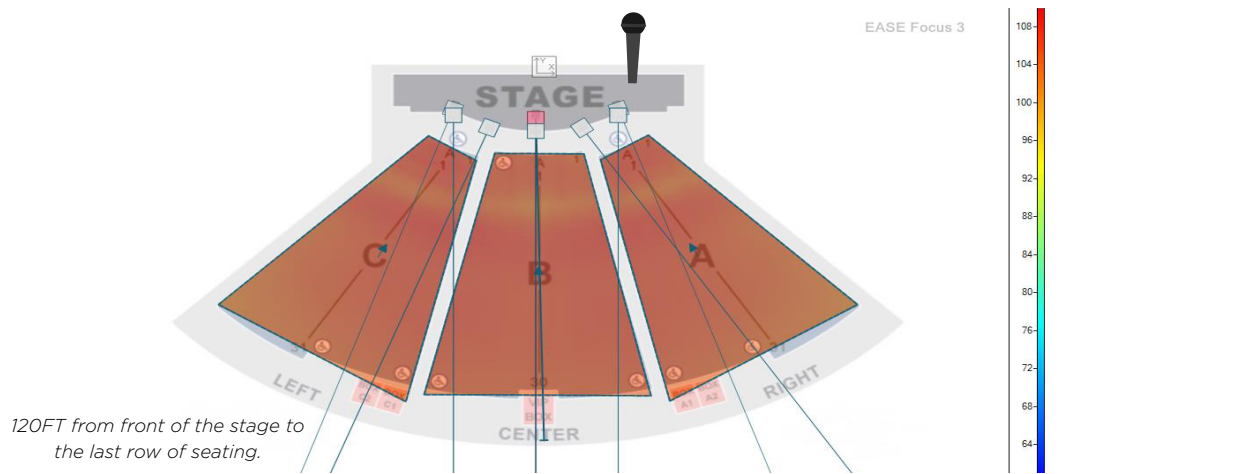
blamp.



Community™ LVH-900 Beamforming Venue Horn is designed for exceptional performance in large venues, allowing it to precisely cover the amphitheater with smooth, even-full range sound distribution. Left and right arrays of the weather-resistant Community LVH-909 Active Plus and a center single cabinet LVH-909 Active Standard allow for high performance audio, superior intelligibility and consistent coverage of the audience. I Series compacts placed along the stage fill are an excellent option for additional support to the front seating. I Series subwoofers mounted on the floor provide additional bass.

- Large format, horn-loaded triaxial array maintains pattern control to below 200Hz
- Colinear manifold for HF and MF beamforming
- Variable dispersion, very high output, arrayable point source loudspeaker
- Discreet styling and aesthetics for appealing sound system designs
- Variety of mounting and array brackets eliminate the need for custom rigging
- Time-saving system design & modeling in EASE Focus





*See [Cornerstone](#) article for full LVH-900 amplification and wiring details.

BIAMP EQUIPMENT LIST

QUANTITY	PRODUCT	FUNCTION
2	LVH-909WR/AP	Provides the highest output, widest bandwidth, and most consistent coverage of any large format point source loudspeaker on the market. (Dual-cabinet array active plus, vertical 20°, left and right arrays)
1	LVH-909WR/AS	Provides the highest output, widest bandwidth, and most consistent coverage of any large format point source loudspeaker on the market. (Single cabinet active standard, vertical 60°, center stage)
6	IC6-2082WR/96	Provides exceptional audio clarity, place as stage lip fill to support the front seating. (Optional)
6	IS8-218WR	Subwoofers are mounted on the floor for full low frequency support.
5	ALC-404D	Provides amplification to the LVH-909 in the amphitheater (1 required for each LVH-909).
5	ALC-1604D	Provides amplification to the LVH-909 in the amphitheater (1 required for each LVH-909).
6	ALC-3202D	Provides amplification to the subwoofers in the amphitheater.
1	TesiraFORTÉ DAN AI	Provides front end DSP for microphone and media inputs.