

SYSTEM DESIGN GUIDE

FOOTBALL FIELD SCOREBOARD

COMMUNITY LVH-900

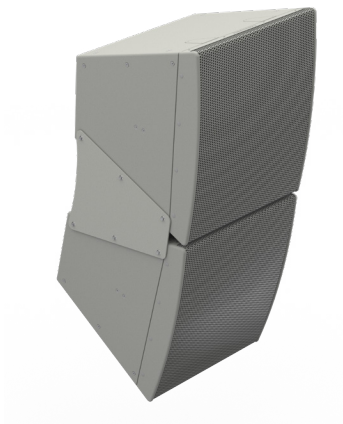
biamp.

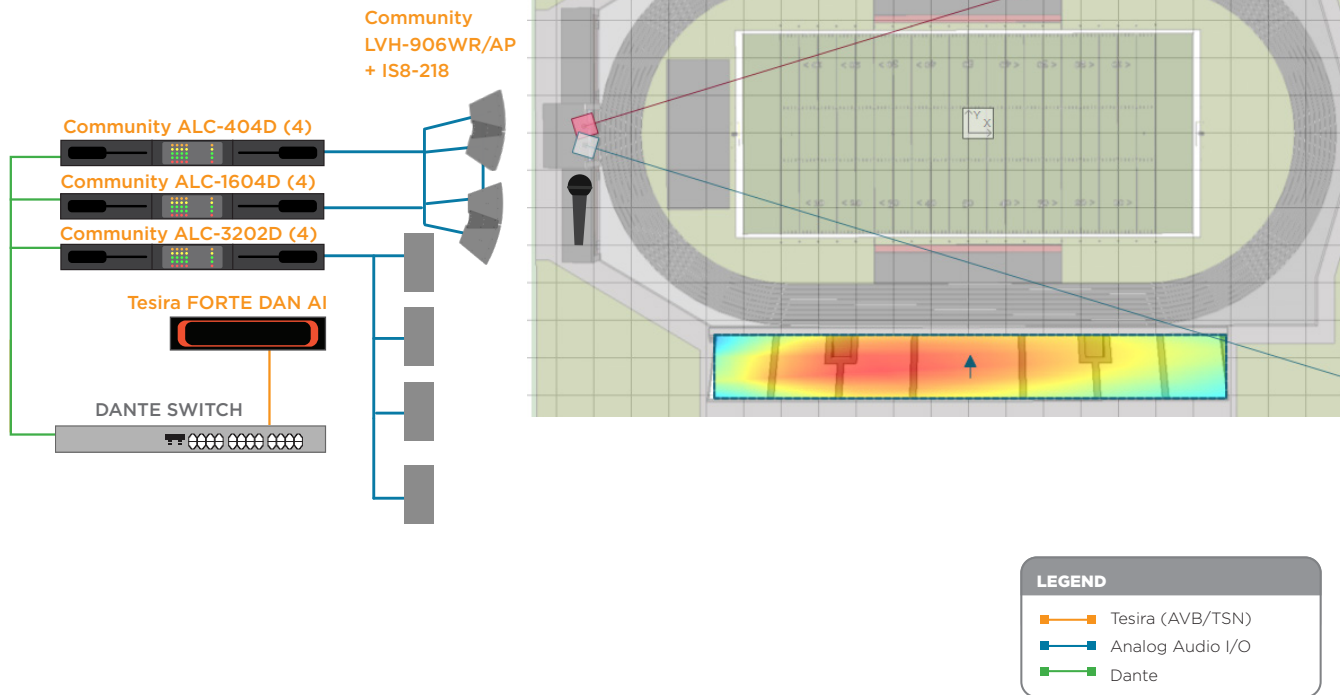


Community™ LVH-900 Beamforming Venue Horn is designed for exceptional performance in large venues, which makes it perfect for football fields in need of high output and smooth frequency response. Community LVH-900 provides exceptional sound quality and unmatched intelligibility at maximum output levels. Paired with I Series subwoofers to provide additional low frequency support for spectators and participants.

FEATURES/BENEFITS

- Large format, horn-loaded triaxial array maintains pattern control to below 200Hz
- Colinear manifold for HF and MF beamforming
- Variable dispersion, very high output, arrayable point source loudspeaker
- Discreet styling and aesthetics for appealing sound system designs
- Variety of mounting and array brackets eliminate the need for custom rigging
- Time-saving system design & modeling in EASE Focus





BIAMP EQUIPMENT LIST

QUANTITY	PRODUCT	FUNCTION
2	LVH-906WR/AP	Provides the highest output, widest bandwidth, and most consistent coverage of any large format point source loudspeaker on the market.
4	Community IS8-218WR	Subwoofers that are mounted horizontally behind each LVH-906 for full low frequency support.
4	ALC-404D	Provides amplification to the LVH-906 on the football field (1 required for each LVH-906).
4	ALC-1604D	Provides amplification to the LVH-906 on the football field (1 required for each LVH-906).
4	ALC-3202D	Provides amplification to the subwoofers on the football field
1	TesiraFORTÉ DAN AI	Provides front end DSP for microphone and media inputs.