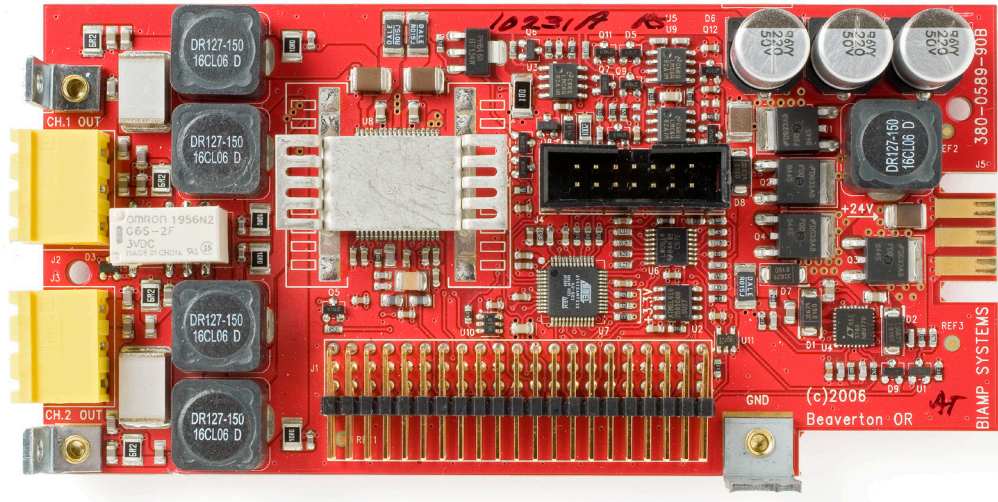




Audia® PA-2 Card Dual-Channel Power Amplifier



PA-2 amplifier cards allow AudiaFLEX to directly power 4, 6, or 8 ohm speakers. The output power is software configurable from 5 to 30 watts dual-channel and from 10 to 60 watts mono-bridged. An upgraded AudiaFLEX power supply provides a total of 120 watts of power, for up to twelve PA-2 cards.

FEATURES

- Each card provides two amplifier channels
- Integrates seamlessly into AudiaFLEX systems
- Each card can be configured for mono-bridge
- Selectable power output ratings
- Manual or automatic load impedance selection
- Load and thermal fault monitoring
- Invert function allows 180° signal polarity reversal
- Selectable clip-limiter function
- Peak output indicator
- **RoHS** compliance and **AES** grounding practices
- Covered by Biamp Systems' five-year warranty

ARCHITECTS & ENGINEERS SPECIFICATION

The power amplifier card shall be a two-channel card for AudiaFLEX hardware. Each card shall provide two balanced speaker outputs on a plug-in barrier strip connector. Software adjustments of individual outputs shall include: mute, gain, signal invert, clip-limit. Configurable two-channel power ratings shall be 2x5 watts, 2x10 watts, 2x20 watts, 2x30 watts into 8, 6, or 4 ohms. Configurable mono-bridge power rating shall be 1x10 watts, 1x20 watts, 1x40 watts, and 1x60 watts into 8, 6, or 4 ohms. Performance specifications shall be: THD+N <0.35% (20Hz~20kHz); signal-to-noise >89dB; crosstalk <-70dB at 1kHz. The power amplifier shall have load and thermal fault protection. Up to twelve power amplifier cards may be installed into a single AudiaFLEX unit. The power amplifier card shall incorporate AES48-2005 Grounding & EMC practices, and shall be compliant with EU Directive 2002/95/EC, the RoHS directive. Warranty shall be 5 years.

The power amplifier card shall be a PA-2 Card for AudiaFLEX.

Audia® PA-2 Card SPECIFICATIONS

Output Power (selectable @ 8, 6, or 4 ohms):	2 x 5 watts	Crosstalk (at 1kHz):	< -70dB
	2 x 10 watts		
	2 x 20 watts		
	2 x 30 watts		
	1 x 10 watts		
	1 x 20 watts		
	1 x 30 watts		
	1 x 40 watts		
	1 x 60 watts		
	THD +N (20Hz-20kHz @ +4dBu):		< 0.35%
Signal-to-Noise:	>89dB		
		Compliance:	AES48-2005 Grounding & EMC practices
			EU Directive 2002/95/EC, RoHS directive

